

# 9976 COTTON PICKER



**JOHN DEERE**

## PARTS CATALOG

9976 COTTON PICKER

PC2446 (MAY-05) English

**John Deere Des Moines Works**

North American Edition

Litho In U.S.A. (Revised)

COPYRIGHT © 2005

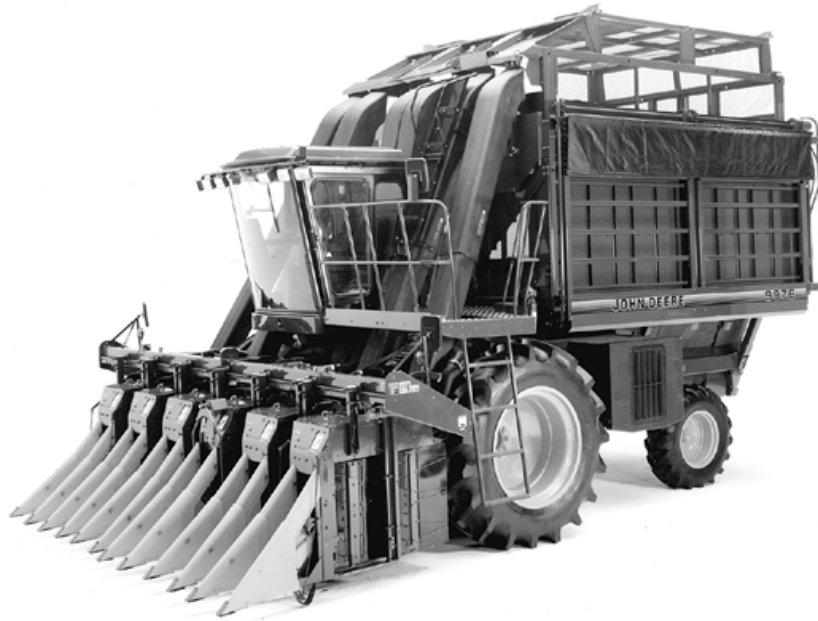
DEERE & COMPANY

Moline, Illinois

All rights reserved



N42176CZ -UN-23MAY97



*JOHN DEERE 9976 COTTON PICKER  
(MANUFACTURED 1997-2001)*

*(SPECIFICATIONS AND DESIGN ARE SUBJECT TO CHANGE WITHOUT NOTICE.)*

## PRODUCT IDENTIFICATION NUMBER LISTING INFORMATION

THE COTTON PICKER PRODUCT IDENTIFICATION NUMBER PLATE IS LOCATED ON LEFT-HAND SIDE OF MAIN FRAME, AT CENTER.

PRODUCT IDENTIFICATION NUMBER (PIN) INFORMATION IS LISTED TO SHOW ON WHICH MACHINES EACH PART CAN BE USED; FOR EXAMPLE:

-	THE PART CAN BE USED ON ALL MACHINES.
000000-	THE PART CAN BE USED ON ALL MACHINES BEGINNING WITH THE PIN OR YEAR.
-000000	THE PART CAN BE USED ON ALL MACHINES UP TO AND INCLUDING THE PIN OR YEAR LISTED.
000000-000000	THE PART CAN BE USED ON ALL MACHINES BETWEEN AND INCLUDING THE PRODUCT IDENTIFICATION NUMBERS OR YEARS LISTED.

WHEN XXXXXX'S ARE LISTED IN PLACE OF A PRODUCT IDENTIFICATION NUMBER, A CHANGE WAS MADE BUT THE EXACT PIN WAS NOT AVAILABLE WHEN THE CATALOG WAS PRODUCED.

## DIRECTION ARROW

ARROWS ARE USED WITH ILLUSTRATIONS TO INDICATE THE FRONT OF THE UNIT. "RIGHT-HAND" AND "LEFT-HAND" SIDES ARE DETERMINED BY FACING IN THE DIRECTION OF MACHINE FORWARD TRAVEL.

## BOX-ENCLOSED ILLUSTRATIONS

A KEY NUMBER, SHOWN IN THE PARTS LIST, IS ASSIGNED TO A BOX ENCLOSING ALL PARTS SOLD AS A SERVICE ASSEMBLY.

## BOLT AND CAP SCREW STRENGTH IDENTIFICATION

BOLTS AND CAP SCREWS REQUIRED TO HAVE HIGH-STRENGTH QUALITIES EQUIVALENT TO SAE GRADE 8 ARE IDENTIFIED THROUGHOUT THIS CATALOG BY THE DESCRIPTION HS SAE 8. ALL STANDARD BOLTS AND CAP SCREWS ARE SAE GRADE 5 OR LOWER.

## COMPLETE GOODS LISTINGS

COMPLETE GOODS ARE LISTED IN BOLD FACE TYPE. ORDER SEPARATELY. DO NOT INCLUDE ON REPLACEMENT PARTS ORDER.

## SI UNITS OF MEASURE

METRIC DIMENSIONS ARE GIVEN, WHERE APPLICABLE, THROUGHOUT THIS PARTS CATALOG.

HOSE DIMENSIONS LISTED ARE EITHER FITTING SIZE X LENGTH X FITTING SIZE OR I.D. X LENGTH.

**Thanks very much for your reading,  
Want to get more information,  
Please click here, Then get the complete  
manual**

**JustClickHere** 

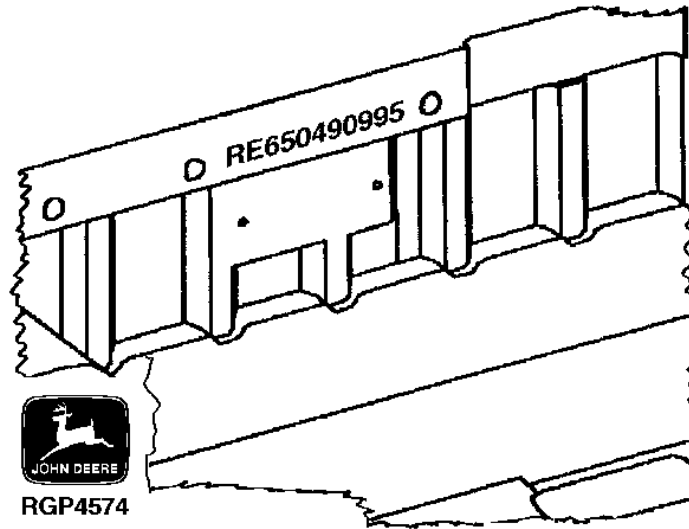
**NOTE:**

**If there is no response to click on the link above,  
please download the PDF document first, and then  
click on it.**

**Have any questions please write to me:  
[admin@servicemanualperfect.com](mailto:admin@servicemanualperfect.com)**

## SHORT BLOCK SERIAL NUMBER IDENTIFICATION (EXAMPLE SHOWN)

RGP4574 -UN-02OCT95



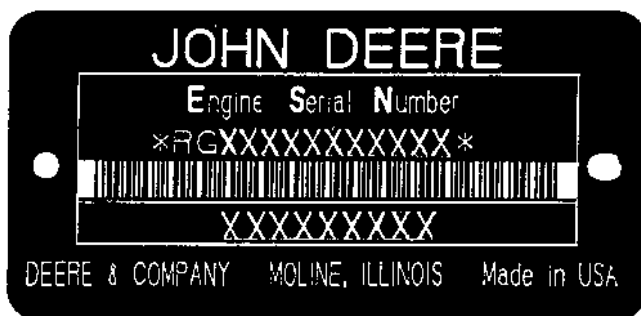
SERIAL NUMBER STAMPED INTO CASTING OF BLOCK NEAR PREVIOUS SERIAL NUMBER PLATE.

EXAMPLE: RE650490295

- |                                   |         |
|-----------------------------------|---------|
| 1. DESIGNATES SERVICE PART NUMBER | RE65049 |
| 2. DESIGNATES MONTH ASSEMBLED     | 09      |
| 3. DESIGNATES YEAR ASSEMBLED      | 95      |

**TWO LINE BAR CODED ENGINE SERIAL NUMBER PLATE**  
(LOCATED ON STARTER SIDE OF ENGINE)

RGP3513 -UN-01JAN94



RGP3513

**FIRST LINE**

**DEFINES**

RG - WATERLOO ENGINE WORKS

DESIGNATES ENGINE MANUFACTURER.

6

DESIGNATES NUMBER OF CYLINDERS.

081 (8.1 LITERS)

DESIGNATES LITER DISPLACEMENT.

H - AIR-TO-AIR

DESIGNATES TYPE OF AIR INTAKE SYSTEM.

N

DESIGNATES DES MOINES WORKS.

XXXXXX

DESIGNATES ENGINE SERIAL NUMBER.

**SECOND LINE**

**APPLICATION**

6081HN001 (ESN -074944)

9976

6081HN003 (ESN 074945-)

9976

## SECTION INDEX

GENERAL INFORMATION . . . . .	10
ENGINE . . . . .	20
FUEL AND AIR . . . . .	30
ELECTRICAL . . . . .	40
POWER TRAIN . . . . .	50
STEERING AND BRAKES . . . . .	60
HYDRAULICS . . . . .	70
WHEELS, REAR AXLES AND SHEET METAL . . . . .	80
OPERATOR STATION . . . . .	90
PICKING UNIT LIFT . . . . .	.100
PICKING UNIT CABINET. . . . .	.110
PICKING UNIT SYSTEM . . . . .	.120
PICKING UNIT LUBRICATION SYSTEM . . . . .	.130
WATER SYSTEM. . . . .	.140
AIR SYSTEM. . . . .	.150
BASKET . . . . .	.160
DECALS . . . . .	.170
PREFERRED METRIC HARDWARE . . . . .	.180
NUMERICAL INDEX . . . . .	.190



## ALPHABETICAL INDEX

A	PAGE	PAGE	
A/C COMPRESSOR (S/N 4001- ) . . . . .	90 - 65	AUXILIARY PLUG CONNECTOR . . . . .	40 - 69
A/C COMPRESSOR AND ALTERNATOR DRIVE (S/N -4000) . . . . .	40 - 42	AXLE KNEE AND KNUCKLE, REAR . . . . .	80 - 6
ACCESS COVER FUEL INJECTION PUMP (S/N 4001- ) . . . . .	40 - 44	AXLE PIVOT SUPPORT, FRONT . . . . .	80 - 2
ACCUMULATOR AND BASKET DOOR OPEN-CLOSE (S/N 2101-6000). . . . .	70 - 34	AXLE PIVOT SUPPORT, REAR . . . . .	80 - 4
ACCUMULATOR AND BASKET DOOR OPEN-CLOSE (S/N 6001- ) . . . . .	70 - 36	AXLE SPACERS . . . . .	80 - 12
ADAPTER, OIL COOLER . . . . .	20 - 70	AXLE SPACERS . . . . .	80 - 18
ADAPTER, OIL COOLER BYPASS . . . . .	20 - 69	AXLE TIE RODS, REAR. . . . .	80 - 8
ADAPTOR, HYDROSTATIC TO HYDRAULIC PUMP . . . . .	50 - 38	AXLE, FINAL DRIVE . . . . .	50 - 14
ADJUSTER, DOFFER, UPPER . . . . .	120 - 24	AXLE, FRONT . . . . .	80 - 10
ADJUSTER, SEAT . . . . .	90 - 58	AXLE, REAR CENTER . . . . .	80 - 1
AID, COLD WEATHER STARTING . . . . .	30 - 22		
AIR CLEANER AND AIR INTAKE TUBES (S.N. -4000). . . . .	30 - 2	B	
AIR CLEANER AND AIR INTAKE TUBES (S.N. 4001- ) . . . . .	30 - 4	BACKREST, OPERATOR'S SEAT. . . . .	90 - 52
AIR CONDITIONER COMPRESSOR FAN PULLEY (S/N 4001- ) . . . . .	40 - 43	BAR DRUM, STUD AND BEARING, PICKER . . . . .	120 - 22
AIR CONDITIONER COMPRESSOR HARDWARE KIT . . . . .	90 - 68	BAR JOURNAL BEARING . . . . .	120 - 16
AIR CONDITIONER COMPRESSOR IDLER PULLEY (S/N 4001- ) . . . . .	40 - 43	BAR, GRID, PICKING UNIT (PRO-12 18S). . . . .	110 - 16
AIR CONDITIONER COMPRESSOR SUPPORT (S/N 4001- ) . . . . .	40 - 43	BAR, GRID, PICKING UNIT (PRO-16 20S). . . . .	110 - 18
AIR CONDITIONING COMPRESSOR (S/N -4000) . . . . .	90 - 64	BAR, MIRROR . . . . .	90 - 78
AIR CONDITIONING COMPRESSOR (S/N 4001- ) . . . . .	90 - 65	BAR, PICKER . . . . .	120 - 18
AIR CONDITIONING CONDENSER . . . . .	20 - 1	BASE, FUEL FILTER . . . . .	30 - 20
AIR CONDITIONING CONDENSER, HOSES AND DRYER (S/N -4000) . . . . .	90 - 70	BASE, OIL FILTER . . . . .	20 - 32
AIR CONDITIONING CONDENSOR, HOSES AND DRYER (S/N 4001- ) . . . . .	90 - 72	BASKET ASSEMBLY, LOWER FRONT . . . . .	160 - 6
AIR CONDITIONING EVAPORATOR . . . . .	90 - 74	BASKET ASSEMBLY, LOWER REAR . . . . .	160 - 12
AIR COOLER . . . . .	20 - 1	BASKET ASSEMBLY, LOWER, RIGHT SIDE . . . . .	160 - 8
AIR FILTER, CAB . . . . .	90 - 41	BASKET CONTROL VALVE . . . . .	70 - 15
AIR LOUVER, PANEL AND SWITCHES. . . . .	90 - 40	BASKET DEFLECTOR . . . . .	160 - 56
AIR MANIFOLD AND DUCTS . . . . .	150 - 4	BASKET DOOR CONVEYOR . . . . .	160 - 18
AIR TUBES AND NOZZLES . . . . .	150 - 6	BASKET DOOR CONVEYOR CHAIN PROTECTORS AND SUPPORTS . . . . .	160 - 20
ALARM . . . . .	40 - 30	BASKET DOOR EXTENSION . . . . .	160 - 26
ALTERNATOR . . . . .	40 - 48	BASKET DOOR FLAP AND SAFETY SWITCH. . . . .	160 - 22
ALTERNATOR ADJUSTING STRAP (S/N 4001- ) . . . . .	40 - 44	BASKET DOOR OPEN-CLOSE AND ACCUMULATOR HYDRAULIC LINES (S/N 2101-6000). . . . .	70 - 34
ALTERNATOR AND A/C COMPRESSOR DRIVE (S/N -4000) . . . . .	40 - 42	BASKET DOOR OPEN-CLOSE AND ACCUMULATOR HYDRAULIC LINES (S/N 6001- ) . . . . .	70 - 36
ALTERNATOR AND MOUNTING BRACKETS . . . . .	40 - 38	BASKET DOOR OPENING, UPPER . . . . .	160 - 10
ALTERNATOR BRACKET (6081 ENGINE). . . . .	40 - 44	BASKET DOOR STRUCTURE . . . . .	160 - 16
ALTERNATOR CAPACITOR . . . . .	40 - 48	BASKET EXTENSION HYDRAULICS . . . . .	70 - 32
ALTERNATOR PULLEY. . . . .	40 - 48	BASKET EXTENSION LATCH . . . . .	160 - 48
ALTERNATOR SUPPORT (S/N 4001- ) . . . . .	40 - 44	BASKET EXTENSION LID ASSEMBLY . . . . .	160 - 38
ANGLE, PICKING UNIT BOTTOM FRAME (PRO-12 UNIT) . . . . .	110 - 12	BASKET EXTENSION, FRONT . . . . .	160 - 40
ANGLE, PICKING UNIT BOTTOM FRAME (PRO-16 UNIT) . . . . .	110 - 14	BASKET EXTENSION, LEFT . . . . .	160 - 44
ANTENNA, RADIO . . . . .	40 - 50	BASKET EXTENSION, REAR . . . . .	160 - 46
APRON, FRONT PLATFORM . . . . .	90 - 1	BASKET EXTENSION, RIGHT . . . . .	160 - 42
ARM, PICKER BAR . . . . .	120 - 18	BASKET FLOOR . . . . .	160 - 4
ARM, STALKLIFTER PIVOT . . . . .	110 - 32	BASKET FLOOR BRUSHES. . . . .	160 - 34
ARMREST, SEAT (PERSONAL-POSTURE™ SEAT) . . . . .	90 - 54	BASKET FLOOR CONVEYOR . . . . .	160 - 28
ARMS, ROCKER. . . . .	20 - 25	BASKET FLOOR CONVEYOR CHAIN PROTECTORS AND SUPPORTS . . . . .	160 - 30
ARMS, UNIT LIFT . . . . .	100 - 4	BASKET FULL MONITORING SYSTEM. . . . .	160 - 54
ASH TRAY, CONSOLE . . . . .	90 - 44	BASKET LAMPS AND WIRING HARNESS . . . . .	40 - 24
ASSEMBLY, CLUTCH (STARTER) . . . . .	40 - 46	BASKET LID EXTENSION. . . . .	160 - 50
AUGER, COMPACTOR . . . . .	160 - 36	BASKET LID HANDRAILS. . . . .	160 - 52
		BASKET MANIFOLD, HYDRAULIC . . . . .	70 - 6
		BASKET RAISE HYDRAULICS. . . . .	70 - 30
		BASKET STAND, REAR . . . . .	160 - 14
		BASKET SUPPORT ASSEMBLY . . . . .	160 - 2
		BATTERIES AND CABLES . . . . .	40 - 1
		BATTERY SUPPORT TRAY ( -4000) . . . . .	80 - 40
		BATTERY SUPPORT TRAY (4001- ) . . . . .	80 - 42
		BEAM, BASKET SUPPORT . . . . .	160 - 2
		BEARING CAP, FINAL DRIVE . . . . .	50 - 13

## ALPHABETICAL INDEX - CONTINUED

	PAGE		PAGE
BEARING KIT, UNDERSIZED MAIN BEARING		BRUSH BRACKETS, FLOOR . . . . .	160 - 32
CRANKSHAFT . . . . .	20 - 13	BRUSHES, BASKET FLOOR . . . . .	160 - 34
BEARING, PICKER BAR DRUM . . . . .	120 - 22	BULB, WARNING LAMP	
BEARING, THRUST . . . . .	20 - 14	(SERIAL NO. -4000) . . . . .	40 - 6
BEARINGS, FINAL DRIVE . . . . .	50 - 14	BUSHING, CAMSHAFT . . . . .	20 - 2
BEARINGS, MAIN . . . . .	20 - 14	BUSHING, CAMSHAFT . . . . .	20 - 20
BELT TENSIONER (ALT.) (6081 ENGINE) . . . . .	40 - 44	BYPASS TUBES, OIL COOLER . . . . .	20 - 69
BELT, ALTERNATOR AND A/C COMPRESSOR		BYPASS VALVE, OIL FILTER . . . . .	20 - 32
(S/N -4000) . . . . .	40 - 42		
BELT, COTTON FAN DRIVE . . . . .	150 - 2	<b>C</b>	
BELT, ENGINE FAN DRIVE		CAB AIR FILTER AND HOUSING . . . . .	90 - 41
(SERIAL NO. -4000) . . . . .	20 - 56	CAB DOOR . . . . .	90 - 28
BELT, ENGINE FAN DRIVE		CAB INTERIOR PANELS . . . . .	90 - 34
(SERIAL NO. 4001- ) . . . . .	20 - 58	CAB LAMP WIRING HARNESS . . . . .	40 - 25
BELT, HYDRAULIC PUMP DRIVE . . . . .	70 - 5	CAB REAR UPHOLSTERY . . . . .	90 - 36
BELT, ROTARY SCREEN DRIVE . . . . .	20 - 60	CAB ROOF AND RADIO HARNESS . . . . .	40 - 51
BELT, ROTARY SCREEN DRIVE . . . . .	20 - 62	CAB ROOF AND SUPPORTS . . . . .	90 - 30
BELT, UNIT DRIVE COUNTERSHAFT . . . . .	120 - 2	CAB ROOF HEADLINER . . . . .	90 - 33
BELT, WATER PUMP DRIVE		CAB WINDOWS (SOUND-GARD) . . . . .	90 - 25
(SERIAL NO. -9045) . . . . .	140 - 6	CAB, SOUND-GARD (COMPLETE) . . . . .	90 - 24
BELT, WATER PUMP DRIVE		CABINET, PLUGS AND GROMMETS . . . . .	110 - 38
(SERIAL NO. 9046- ) . . . . .	140 - 8	CABLE, HYDROSTATIC CONTROL . . . . .	50 - 44
BELTS, ENGINE DRIVE AND DRIVEN . . . . .	20 - 67	CABLE, PARK BRAKE . . . . .	60 - 20
BELTS, ENGINE FAN . . . . .	20 - 54	CABLE, REAR DRUM PRESSURE PLATE	
BEVEL GEAR, COMPACTOR DRIVE . . . . .	160 - 36	(PRO-12 18S) . . . . .	110 - 24
BLADE, VINE CUTTER . . . . .	120 - 26	CABLE, REAR DRUM PRESSURE PLATE	
BLADE, WINDSHIELD WIPER . . . . .	90 - 76	(PRO-16 20S) . . . . .	110 - 26
BLEED SCREW, BRAKE SLAVE CYLINDER . . . . .	60 - 24	CABLE, TRANSMISSION SHIFT . . . . .	50 - 26
BLOCK HEATER . . . . .	40 - 3	CABLES, BATTERY . . . . .	40 - 1
BLOCK, SHORT . . . . .	20 - 8	CAM, PICKER DRUM . . . . .	120 - 16
BLOWER, PRESSURIZER . . . . .	90 - 38	CAMSHAFT . . . . .	20 - 20
BOLTS, CYLINDER HEAD . . . . .	20 - 22	CAMSHAFT BUSHING . . . . .	20 - 2
BOOT, HYDROSTATIC CONTROL CABLE . . . . .	50 - 44	CAMSHAFT BUSHING . . . . .	20 - 20
BOTTOM FRAME, PICKING UNIT		CAMSHAFT FOLLOWER . . . . .	20 - 20
(PRO-12 UNIT) . . . . .	110 - 12	CAMSHAFT FOLLOWER . . . . .	20 - 25
BOTTOM FRAME, PICKING UNIT		CAMSHAFT GEAR . . . . .	20 - 20
(PRO-16 UNIT) . . . . .	110 - 14	CAP, FUEL . . . . .	30 - 10
BOX, MONITOR . . . . .	90 - 42	CAP, FUEL . . . . .	30 - 12
BOX, SKIP ROW GEAR . . . . .	120 - 6	CAP, HYDRAULIC RESERVOIR	
BRACE, FEEDBACK SENSOR, ROW-TRAK . . . . .	60 - 32	(S/N -XXXX) . . . . .	70 - 1
BRACKET, A/C COMPRESSOR MOUNTING		CAP, HYDRAULIC RESERVOIR	
(S/N -4000) . . . . .	40 - 42	(S/N XXXX- ) . . . . .	70 - 2
BRACKET, ALTERNATOR (S/N 4001- ) . . . . .	40 - 44	CAP, HYDROSTATIC PUMP END . . . . .	50 - 36
BRACKET, COMPRESSOR MOUNTING		CAP, LUBRICATION TANK	
(S/N -4000) . . . . .	40 - 42	(SERIAL NO. -4000) . . . . .	130 - 2
BRACKET, DOFFER IDLER GEAR . . . . .	120 - 29	CAP, LUBRICATION TANK	
BRACKET, ETHER AID . . . . .	30 - 23	(SERIAL NO. 4001- ) . . . . .	130 - 4
BRACKET, FIRE EXTINGUISHER . . . . .	80 - 22	CAP, REAR WHEEL BEARING . . . . .	80 - 15
BRACKET, TRANSMISSION . . . . .	50 - 2	CAPACITOR, ALTETNATOR . . . . .	40 - 48
BRACKET, WATER PUMP		CAPS, MAIN BEARING . . . . .	20 - 2
(SERIAL NO. -9045) . . . . .	140 - 6	CASE, GEAR, PICKING UNIT . . . . .	120 - 8
BRACKET, WATER PUMP		CASE, MONITOR . . . . .	90 - 42
(SERIAL NO. 9046- ) . . . . .	140 - 8	CASE, TRANSMISSION . . . . .	50 - 10
BRACKETS, ALTERNATOR MOUNTING . . . . .	40 - 38	CAUTION LIGHT, MONITOR . . . . .	40 - 36
BRACKETS, FIRE EXTINGUISHER . . . . .	80 - 20	CHAIN PROTECTORS AND SUPPORTS,	
BRACKETS, FLOOR BRUSHES . . . . .	160 - 32	BASKET DOOR CONVEYOR . . . . .	160 - 20
BRACKETS, MIRROR . . . . .	90 - 78	CHAIN PROTECTORS AND SUPPORTS,	
BRAKE CABLE, PARK . . . . .	60 - 20	BASKET FLOOR CONVEYOR . . . . .	160 - 30
BRAKE CYLINDER, MASTER . . . . .	60 - 16	CHAIN, BASKET DOOR EXTENSION . . . . .	160 - 26
BRAKE LINES AND RESERVOIR . . . . .	60 - 14	CHAIN, CONVEYOR, BASKET DOOR . . . . .	160 - 18
BRAKE PEDAL, PARK . . . . .	60 - 19	CHAIN, CONVEYOR, BASKET FLOOR . . . . .	160 - 28
BRAKE PEDALS . . . . .	60 - 18	CHAIN, LIFT ARM . . . . .	100 - 4
BRAKE SHOES AND DRUM . . . . .	60 - 22	CHAIN, LOW COTTON . . . . .	110 - 32
BRAKE SLAVE CYLINDER . . . . .	60 - 24	CHAINS, DUCT LIFT . . . . .	150 - 15
BREAKERS, CIRCUIT . . . . .	40 - 40	CHANNEL, BASKET DEFLECTOR . . . . .	160 - 56
BREATHER, FUEL TANK . . . . .	30 - 10		
BREATHER, FUEL TANK . . . . .	30 - 12		

## ALPHABETICAL INDEX - CONTINUED

	PAGE		PAGE
CHANNEL, BASKET DOOR EXTENSION . . . . .	160 - 26	CONNECTOR, FLOOR SHROUD . . . . .	90 - 44
CHANNEL, PICKING UNIT BOTTOM FRAME (PRO-12 UNIT) . . . . .	110 - 12	CONNECTOR, FUSE AND RELAY BLOCK . . . . .	40 - 63
CHANNEL, PICKING UNIT BOTTOM FRAME (PRO-16 UNIT) . . . . .	110 - 14	CONNECTOR, KEY SWITCH, CONSOLE LIGHT, ETHER SWITCH AND WARNING HORN . . . . .	40 - 70
CHARGE AIR PIPING . . . . .	30 - 1	CONNECTOR, MICROSWITCH AND AUXILIARY PLUG . . . . .	40 - 69
CHARGE PUMP SHAFT, HYDROSTATIC . . . . .	50 - 38	CONNECTOR, MOMENTARY FLOOR SWITCH . . . . .	40 - 64
CHARGE RELIEF VALVE, HYDROSTATIC PUMP . . . . .	50 - 30	CONNECTOR, MONITOR LIGHT MODULE AND TACHOMETER . . . . .	40 - 68
CHASSIS SIDE SHIELDING (S.N. -4000) . . . . .	80 - 26	CONNECTORS, ELECTRICAL, WEATHERPACK . . . . .	40 - 58
CHASSIS SIDE SHIELDING (S.N. 4001- ) . . . . .	80 - 28	CONNECTORS, FLOOR ELECTRICAL . . . . .	40 - 66
CHASSIS WIRING HARNESS ( -4000) . . . . .	40 - 16	CONNECTORS, FUEL INJECTION PUMP HOUSING . . . . .	30 - 26
CHASSIS WIRING HARNESS (4001- ) . . . . .	40 - 34	CONSOLE ASSEMBLY . . . . .	90 - 44
CHASSIS WIRING HARNESS (4001-9000) . . . . .	40 - 18	CONSOLE CONTROL LEVERS . . . . .	90 - 48
CHASSIS WIRING HARNESS (9001- ) . . . . .	40 - 20	CONSOLE CONTROLS, FUSES AND RELAYS . . . . .	40 - 30
CHECK VALVE, FUEL TANK . . . . .	30 - 10	CONSOLE LIGHT CONNECTOR . . . . .	40 - 70
CHECK VALVE, FUEL TANK . . . . .	30 - 12	CONSOLE SWITCH CONNECTOR . . . . .	40 - 71
CHECK VALVE, HYDROSTATIC PUMP . . . . .	50 - 36	CONSOLE WIRING HARNESS . . . . .	40 - 32
CHECK VALVE, UNIT LIFT & HEIGHT SENSING (4 OR 5 ROW) . . . . .	70 - 16	CONTROL CABLE, HYDROSTATIC . . . . .	50 - 44
CHECK VALVE, UNIT LIFT HYDRAULIC, WINNER UNIT HEIGHT SENSING . . . . .	70 - 22	CONTROL HANDLE, HYDROSTATIC . . . . .	90 - 46
CHECK VALVE, WATER SYSTEM . . . . .	140 - 14	CONTROL LEVERS, CONSOLE . . . . .	90 - 48
CHECK VALVE, WATER TANK (SERIAL NO. -4000) . . . . .	140 - 2	CONTROL SWITCHES, AIR CONDITIONER . . . . .	90 - 40
CHECK VALVE, WATER TANK (SERIAL NO. 4001- ) . . . . .	140 - 4	CONTROL VALVE HOSES AND LINES, UNIT LIFT PRESSURE . . . . .	70 - 20
CHIME HORN . . . . .	40 - 30	CONTROL VALVE, BASKET . . . . .	70 - 15
CIRCUIT BREAKERS AND RELAYS . . . . .	40 - 40	CONTROL VALVE, CONVEYOR . . . . .	70 - 12
CLEAN-OUT DOOR, COTTON DOOR . . . . .	150 - 8	CONTROL VALVE, HEIGHT SENSING HYDRAULIC . . . . .	70 - 26
CLEANING SOLUTION, SPINDLE (SERIAL NO. -4000) . . . . .	140 - 2	CONTROL VALVE, UNIT LIFT . . . . .	70 - 24
CLEANING SOLUTION, SPINDLE (SERIAL NO. 4001- ) . . . . .	140 - 4	CONTROL VALVES AND MANIFOLD, WATER . . . . .	140 - 14
CLUTCH ASSEMBLY (STARTER) . . . . .	40 - 46	CONTROL, TURN SIGNAL . . . . .	40 - 4
CLUTCH, COMPRESSOR . . . . .	90 - 67	CONTROLLER, ENGINE . . . . .	40 - 2
CLUTCH, FAN DRIVE . . . . .	150 - 2	CONTROLLER, ROW-TRAK . . . . .	60 - 25
CLUTCH, SLIP DRUM . . . . .	120 - 12	CONTROLS, FUSES AND RELAYS, CONSOLE . . . . .	40 - 30
CLUTCH, SLIP, LOWER GEAR CASE HUB . . . . .	120 - 10	CONVEYOR CHAIN PROTECTORS, BASKET DOOR . . . . .	160 - 20
COIL, FAN . . . . .	150 - 2	CONVEYOR CHAIN PROTECTORS, BASKET FLOOR . . . . .	160 - 30
COLD WEATHER STARTING AID . . . . .	30 - 22	CONVEYOR CONTROL VALVE . . . . .	70 - 12
COLUMN, SPINDLE MOISTENER . . . . .	140 - 20	CONVEYOR DOOR FRAME . . . . .	160 - 16
COLUMN, STEERING . . . . .	60 - 1	CONVEYOR DOOR WING ASSEMBLIES . . . . .	160 - 24
COMPACTOR . . . . .	160 - 36	CONVEYOR EXTENSION, DOOR . . . . .	160 - 26
COMPACTOR HYDRAULIC LINES . . . . .	70 - 28	CONVEYOR HYDRAULICS, FLOOR AND DOOR . . . . .	70 - 38
COMPACTOR SWITCH, FOOT CONTROL . . . . .	40 - 12	CONVEYOR/EXTENSION MANIFOLD VALVE . . . . .	70 - 6
COMPRESSOR HARDWARE KIT . . . . .	90 - 68	CONVEYOR, BASKET DOOR . . . . .	160 - 18
COMPRESSOR MOUNTING BRACKET (S/N -4000) . . . . .	40 - 42	CONVEYOR, BASKET FLOOR . . . . .	160 - 28
COMPRESSOR PARTS, AIR CONDITIONER . . . . .	90 - 69	COOLANT AND ENGINE TEMPERATURE SENDERS . . . . .	20 - 24
COMPRESSOR, A/C (S/N 4001- ) . . . . .	90 - 65	COOLANT RECOVERY SYSTEM . . . . .	20 - 66
COMPRESSOR, AIR CONDITIONING (S/N -4000) . . . . .	90 - 64	COOLER BYPASS TEE, HYDROSTATIC ( -4000) . . . . .	50 - 20
COMPRESSOR, CLUTCH . . . . .	90 - 67	COOLER BYPASS TEE, HYDROSTATIC (4001-9000) . . . . .	50 - 22
CONDENSER, AIR CONDITIONING (S/N -4000) . . . . .	90 - 70	COOLER BYPASS TEE, HYDROSTATIC (9001- ) . . . . .	50 - 24
CONNECTING RODS . . . . .	20 - 10	COOLER, ENGINE OIL . . . . .	20 - 70
CONNECTOR, CONSOLE SWITCH . . . . .	40 - 71	COOLER, HYDRAULIC OIL . . . . .	70 - 3
CONNECTOR, DIODE MODULE . . . . .	40 - 62	COOLER, HYDRAULIC OIL . . . . .	70 - 4
CONNECTOR, ELECTRICAL, SERVICE KIT . . . . .	40 - 54	COOLING PACKAGE SUPPORT . . . . .	20 - 50
CONNECTOR, ELECTRONIC CONTROLLER, ENGINE SPEED SENSOR AND HORN . . . . .	40 - 65	COTTON DOORS . . . . .	150 - 8
		COTTON FAN AND DRIVE . . . . .	150 - 2
		COUNTERSHAFT, UNIT DRIVE . . . . .	120 - 2
		COUPLING, HYDROSTATIC TO HYDRAULIC PUMP . . . . .	50 - 38
		COVER PLATE, PARK BRAKE . . . . .	90 - 1
		COVER, DIPSTICK . . . . .	20 - 34
		COVER, DOOR TRACK . . . . .	90 - 28
		COVER, FUEL INJECTION PUMP ACCESS (S/N 4001- ) . . . . .	40 - 44
		COVER, INSPECTION, HEAT EXCHANGER (SERIAL NO. -4000) . . . . .	80 - 23

## ALPHABETICAL INDEX - CONTINUED

	PAGE		PAGE
COVER, INSPECTION, HEAT EXCHANGER (SERIAL NO. 4001- ) . . . . .	80 - 24	DIODE, CHASSIS WIRING HARNESS (9001- ) . . . . .	40 - 20
COVER, OIL COOLER . . . . .	20 - 70	DIPSTICK COVER . . . . .	20 - 34
COVER, ROCKER ARM . . . . .	20 - 26	DIPSTICK, ENGINE OIL. . . . .	20 - 37
COVERS AND INNER ROOF . . . . .	90 - 32	DISC, DOFFER . . . . .	120 - 26
CRANKSHAFT . . . . .	20 - 11	DISPLACEMENT CONTROL, HYDROSTATIC PUMP . . . . .	50 - 34
CRANKSHAFT DAMPERS . . . . .	20 - 16	DISTRIBUTOR ASSEMBLY, MOISTENER . . . . .	140 - 20
CRANKSHAFT KIT, UNDERSIZE (CONNECTING ROD JOURNAL) . . . . .	20 - 12	DOFFER . . . . .	120 - 26
CRANKSHAFT PULLEY AND DAMPERS . . . . .	20 - 16	DOFFER ADJUSTER AND STUB SHAFT . . . . .	120 - 24
CROSS SHAFT AND UNIVERSAL JOINT. . . . .	120 - 5	DOFFER DRIVE IDLER GEAR . . . . .	120 - 29
CUTTER, VINE . . . . .	120 - 30	DOFFER GAUGES . . . . .	120 - 28
CYLINDER BLOCK FITTINGS. . . . .	20 - 2	DOFFER IDLER GEARS . . . . .	120 - 14
CYLINDER BLOCK, HYDROSTATIC PUMP . . . . .	50 - 32	DOME LIGHT (ROCKER TYPE) . . . . .	40 - 10
CYLINDER HEAD . . . . .	20 - 22	DOOR AND FLOOR CONVEYOR HYDRAULIC LINES. . . . .	70 - 38
CYLINDER HEAD BOLTS. . . . .	20 - 22	DOOR ASSEMBLY, COTTON . . . . .	150 - 8
CYLINDER HEAD GASKET . . . . .	20 - 22	DOOR CONTACT SWITCH WIRING HARNESS . . . . .	40 - 11
CYLINDER HEAD GASKET KIT . . . . .	20 - 4	DOOR EXTENSION, BASKET . . . . .	160 - 26
CYLINDER LINERS . . . . .	20 - 10	DOOR HINGE, CONVEYOR . . . . .	160 - 18
CYLINDER SEAL KIT, STEERING (FOR CYLINDER RE155989) . . . . .	60 - 12	DOOR OPEN-CLOSE HYDRAULIC LINES, BASKET (S/N 2101-6000) . . . . .	70 - 34
CYLINDER SEAL KIT, STEERING (FOR CYLINDER RE62060) . . . . .	60 - 11	DOOR OPEN-CLOSE HYDRAULIC LINES, BASKET (S/N 6001- ) . . . . .	70 - 36
CYLINDER STOP, UNIT LIFT ARM. . . . .	100 - 4	DOOR OPENING, BASKET, UPPER . . . . .	160 - 10
CYLINDER, ACCUMULATOR HYDRAULIC LINES (S/N 2101-6000). . . . .	70 - 34	DOOR SAFETY SWITCH AND FLAP . . . . .	160 - 22
CYLINDER, ACCUMULATOR HYDRAULIC LINES (S/N 6001- ) . . . . .	70 - 36	DOOR STRUCTURE, BASKET. . . . .	160 - 16
CYLINDER, BASKET DOOR OPEN-CLOSE AND ACCUM. HYDRAULIC (S/N 2101-6000) . . . . .	70 - 34	DOOR WING ASSEMBLY, CONVEYOR . . . . .	160 - 24
CYLINDER, BASKET DOOR OPEN-CLOSE AND ACCUM. HYDRAULIC (S/N 6001- ) . . . . .	70 - 36	DOOR, CAB . . . . .	90 - 28
CYLINDER, BASKET EXTENSION HYDRAULIC. . . . .	70 - 32	DOOR, ROTARY SCREEN . . . . .	20 - 44
CYLINDER, BASKET RAISE HYDRAULIC . . . . .	70 - 30	DOOR, ROTARY SCREEN . . . . .	20 - 46
CYLINDER, BRAKE SLAVE . . . . .	60 - 24	DOOR, ROTARY SCREEN . . . . .	20 - 48
CYLINDER, BRAKE, MASTER. . . . .	60 - 16	DOORS, HYDRAULIC MODULE ( -4000) . . . . .	80 - 48
CYLINDER, HYDRAULIC, 2-1/2" X 12" (EATON) . . . . .	70 - 42	DOORS, HYDRAULIC MODULE (4001- ) . . . . .	80 - 50
CYLINDER, HYDRAULIC, 3-1/2" X 24" (BASKET RAISE-UNLOAD). . . . .	70 - 40	DOORS, UNIT . . . . .	110 - 30
CYLINDER, HYDRAULIC, 3-3/4" X 8" (UNIT LIFT). . . . .	70 - 41	DOORS, UNIT, PRO-12 - 18S (2001 - ) . . . . .	110 - 28
CYLINDER, STEERING. . . . .	60 - 10	DRIVE BELTS AND PULLEYS ARRANGEMENT . . . . .	20 - 67
 <b>D</b> 			
DAMPER KEY . . . . .	20 - 11	DRIVE GEAR, OIL PUMP . . . . .	20 - 11
DAMPERS, CRANKSHAFT . . . . .	20 - 16	DRIVE GEARS, UPPER HOUSING DRUM . . . . .	120 - 14
DECALS, "50TH ANNIVERSARY" (SERIAL NO. 4000 - 6000) . . . . .	170 - 1	DRIVE SHAFT, FINAL DRIVE . . . . .	50 - 16
DEFLECTOR, BASKET . . . . .	160 - 56	DRIVE SHAFT, SPLINED . . . . .	80 - 12
DEHYDRATOR, AIR CONDITIONING (S/N -4000) . . . . .	90 - 70	DRIVE SHAFT, UNIT . . . . .	120 - 4
DIAGNOSTIC KIT, ECU (SERIAL NO. -4000) . . . . .	40 - 72	DRIVE WHEELS, SINGLE. . . . .	80 - 17
DIFFERENTIAL (TRANSMISSION). . . . .	50 - 8	DRIVE, ENGINE FAN (SERIAL NO. -4000) . . . . .	20 - 56
DIMMER SWITCH . . . . .	40 - 5	DRIVE, ENGINE FAN (SERIAL NO. 4001- ) . . . . .	20 - 58
DIODE MODULE. . . . .	40 - 62	DRIVE, FINAL . . . . .	50 - 12
DIODE MODULE, CONSOLE WIRING . . . . .	40 - 32	DRIVE, PUMP, HYDROSTATIC (SERIAL NO. -4000) . . . . .	50 - 18
DIODE, CHASSIS WIRING HARNESS ( -4000). . . . .	40 - 16	DRIVE, PUMP, HYDROSTATIC (SERIAL NO. 4001- ) . . . . .	50 - 19
DIODE, CHASSIS WIRING HARNESS (4001- ) . . . . .	40 - 34	DRUM DRIVE GEARS, UPPER HOUSING . . . . .	120 - 14
DIODE, CHASSIS WIRING HARNESS (4001-9000) . . . . .	40 - 18	DRUM HEAD AND CAM. . . . .	120 - 16
		DRUM SLIP CLUTCH AND IDLER GEARS . . . . .	120 - 12
		DRUM SPEED SENSOR . . . . .	120 - 14
		DRUM, BRAKE. . . . .	60 - 22
		DRUM, PICKER BAR . . . . .	120 - 22
		DRYER, AIR CONDITIONING (S/N 04000) . . . . .	90 - 70
		DRYER, AIR CONDITIONING (S/N 4001- ) . . . . .	90 - 72
		DUAL WHEELS . . . . .	80 - 18
		DUCT LIFT CHAINS . . . . .	150 - 15
		DUCT SUPPORT. . . . .	150 - 16
		DUCT, LADDER . . . . .	150 - 14
		DUCT, ROTARY SCREEN . . . . .	20 - 52

## ALPHABETICAL INDEX - CONTINUED

	PAGE		PAGE
DUCTS, AIR . . . . .	150 - 4	EXHAUST PIPE . . . . .	30 - 8
DUCTS, UNIT TO BASKET (30"-32"-40") . . . . .	150 - 10	EXHAUST VALVE SHIELD. . . . .	20 - 22
DUCTS, UNIT TO BASKET (36"-38"-40") . . . . .	150 - 12	EXHAUST VALVES . . . . .	20 - 22
 <b>E</b> 			
ECU DIAGNOSTIC KIT (SERIAL NO. -4000) . . . . .	40 - 72	EXTENSION AND GRATE, STALKLIFTERS . . . . .	110 - 32
ELBOW TRANSITION, JET POST . . . . .	150 - 6	EXTENSION LID ASSEMBLY, BASKET . . . . .	160 - 38
ELECTRICAL CONNECTOR SERVICE KIT . . . . .	40 - 54	EXTENSION, BASKET DOOR . . . . .	160 - 26
ELECTRICAL CONNECTOR, CONSOLE SWITCH . . . . .	40 - 71	EXTENSION, BASKET LID . . . . .	160 - 50
ELECTRICAL CONNECTOR, DIODE MODULE . . . . .	40 - 62	EXTENSION, BASKET, FRONT . . . . .	160 - 40
ELECTRICAL CONNECTOR, ELECTRONIC CONTROLLER, ENGINE SPEED SENSOR, HORN . . . . .	40 - 65	EXTENSION, BASKET, LEFT . . . . .	160 - 44
ELECTRICAL CONNECTOR, FUSE AND RELAY . . . . .	40 - 63	EXTENSION, BASKET, REAR . . . . .	160 - 46
ELECTRICAL CONNECTOR, HYDRO HANDLE AND GAUGE CLUSTER . . . . .	40 - 61	EXTENSION, BASKET, RIGHT. . . . .	160 - 42
ELECTRICAL CONNECTOR, KEY SWITCH, CONSOLE LIGHT, ETHER SWITCH, HORN . . . . .	40 - 70	EXTENSION, PLATFORM FLOOR (38" & 40"/64" SKIP ROW) ( -2100) . . . . .	90 - 12
ELECTRICAL CONNECTOR, MOMENTARY FLOOR SWITCH . . . . .	40 - 64	EXTENSION, PLATFORM FLOOR (38" & 40"/64" SKIP ROW) (2101- ) . . . . .	90 - 10
ELECTRICAL CONNECTOR, MONITOR LIGHT MODULE AND TACHOMETER . . . . .	40 - 68	EXTENSION, PLATFORM FLOOR (6 ROW) (5 ROW 36,38 W/DUALS)( -2100) . . . . .	90 - 8
ELECTRICAL CONNECTORS, FLOOR . . . . .	40 - 66	EXTENSION, PLATFORM FLOOR (6 ROW) (5 ROW 36,38 W/DUALS)(2101- ) . . . . .	90 - 6
ELECTRICAL CONNECTORS, MICROSWITCH AND AUXILIARY PLUG . . . . .	40 - 69	EXTENSION, PLATFORM FLOOR ( -2100) (SKIP ROW 30"-32"/60" OR 64") . . . . .	90 - 16
ELECTRICAL TERMINALS AND CONNECTORS, WEATHERPACK . . . . .	40 - 58	EXTENSION, PLATFORM FLOOR ( -2100) (4 ROW & 5 ROW 34" SINGLE WHL.) . . . . .	90 - 12
ELECTRICALLY OPERATED STARTING AID . . . . .	30 - 22	EXTENSION, PLATFORM FLOOR ( -2100) (4 ROW DUAL WHEELS W/ADD-ON PLATFORM) . . . . .	90 - 16
ELECTRONIC CONTROL UNIT . . . . .	30 - 16	EXTENSION, PLATFORM FLOOR ( -2100) (4 ROW SINGLE WHEELS EXCEPT 34") . . . . .	90 - 16
ELECTRONIC CONTROLLER CONNECTOR . . . . .	40 - 65	EXTENSION, PLATFORM FLOOR ( -2100) (5 ROW 30",32",34" W/DUALS & PLATFORM) . . . . .	90 - 16
ELEMENT, AIR CLEANER (S.N. -4000) . . . . .	30 - 2	EXTENSION, PLATFORM FLOOR (2101- ) (SKIP ROW 30"-32"/60" OR 64") . . . . .	90 - 14
ELEMENT, AIR CLEANER (S.N. 4001- ) . . . . .	30 - 4	EXTENSION, PLATFORM FLOOR (2101- ) (4 ROW & 5 ROW 34" SINGLE WHL.) . . . . .	90 - 10
ELEMENT, HYDRAULIC OIL FILTER . . . . .	70 - 6	EXTENSION, PLATFORM FLOOR (2101- ) (4 ROW DUAL WHEELS W/ADD-ON PLATFORM) . . . . .	90 - 14
END CAP, HYDROSTATIC PUMP . . . . .	50 - 36	EXTENSION, PLATFORM FLOOR (2101- ) (4 ROW SINGLE WHEELS EXCEPT 34") . . . . .	90 - 14
ENGINE CONTROLLER . . . . .	40 - 2	EXTENSION, PLATFORM FLOOR (2101- ) (5 ROW 30",32",34" W/DUALS & PLATFORM) . . . . .	90 - 14
ENGINE COOLANT HEATER . . . . .	40 - 3	EXTENSIONS, UNIT LIFT FRAME . . . . .	100 - 2
ENGINE DRIVE AND DRIVEN BELTS & PULLEYS. . . . .	20 - 67	EXTINGUISHER, FIRE . . . . .	80 - 20
ENGINE FAN AND DRIVES . . . . .	20 - 54	EXTINGUISHER, FIRE . . . . .	80 - 22
ENGINE FAN DRIVE (SERIAL NO. -4000) . . . . .	20 - 56	 <b>F</b> 	
ENGINE FAN DRIVE (SERIAL NO. 4001- ) . . . . .	20 - 58	FAN. . . . .	150 - 2
ENGINE HOODS . . . . .	80 - 30	FAN DRIVE (HN003) . . . . .	20 - 68
ENGINE OIL. . . . .	20 - 38	FAN DRIVE, ENGINE (SERIAL NO. -4000) . . . . .	20 - 56
ENGINE OIL COOLER . . . . .	20 - 70	FAN DRIVE, ENGINE (SERIAL NO. 4001- ) . . . . .	20 - 58
ENGINE OIL DIPSTICK. . . . .	20 - 37	FAN PULLEY (HN003) . . . . .	20 - 68
ENGINE OIL DIPSTICK TUBE . . . . .	20 - 37	FAN PULLEY, AIR CONDITIONER COMPRESSOR (S/N 4001- ) . . . . .	40 - 43
ENGINE OIL FILTER . . . . .	20 - 32	FAN, ENGINE . . . . .	20 - 54
ENGINE OIL PRESSURE SWITCH. . . . .	20 - 36	FEEDBACK LINK, HYDROSTATIC PUMP . . . . .	50 - 32
ENGINE OIL PUMP . . . . .	20 - 30	FEEDBACK SENSOR BRACE, ROW-TRAK . . . . .	60 - 32
ENGINE OIL PUMP INTAKE. . . . .	20 - 29	FEEDBACK SENSOR, ROW-TRAK. . . . .	60 - 28
ENGINE OVERHAUL KIT . . . . .	20 - 6	FIELD LAMPS (PIN -2100) . . . . .	90 - 79
ENGINE REBUILD GASKET KIT. . . . .	20 - 4	FIELD LAMPS (PIN 2101- ) . . . . .	90 - 80
ENGINE SIDE FRAMES . . . . .	80 - 14	FILL HOSE, LUBRICATION . . . . .	130 - 18
ENGINE SPEED SENSOR . . . . .	20 - 18	FILTER, AIR (ENGINE) (S.N. -4000) . . . . .	30 - 2
ENGINE SPEED SENSOR CONNECTOR. . . . .	40 - 65	FILTER, AIR (ENGINE) (S.N. 4001- ) . . . . .	30 - 4
ENGINE TEMPERATURE SENDER . . . . .	20 - 24	FILTER, AIR, CAB . . . . .	90 - 41
ETHER AID BRACKET . . . . .	30 - 23		
ETHER STARTING FLUID . . . . .	30 - 22		
ETHER SWITCH CONNECTOR . . . . .	40 - 70		
EVAPORATOR AND HOSES . . . . .	90 - 74		
EXHAUST MANIFOLD GASKETS . . . . .	30 - 25		
EXHAUST MANIFOLDS . . . . .	30 - 25		

## ALPHABETICAL INDEX - CONTINUED

	PAGE		PAGE
FILTER, CAB VENT . . . . .	90 - 33	FLYWHEEL (HN001) . . . . .	20 - 28
FILTER, ENGINE OIL. . . . .	20 - 32	FLYWHEEL HUB (HN001) . . . . .	20 - 27
FILTER, FUEL . . . . .	30 - 20	FLYWHEEL HUB (HN001) . . . . .	20 - 28
FILTER, GREASE . . . . .	130 - 11	FOCUS ENGINE CONTROLLER . . . . .	40 - 2
FILTER, HYDRAULIC OIL . . . . .	70 - 6	FOLLOWER, CAMSHAFT . . . . .	20 - 20
FILTER, HYDRAULIC RESERVOIR (S/N -XXXX) . . . . .	70 - 1	FOLLOWER, CAMSHAFT . . . . .	20 - 25
FILTER, HYDRAULIC RESERVOIR (S/N XXXX- ) . . . . .	70 - 2	FOOT CONTROL SWITCHES, COMPACTOR AND FLUSH SYSTEM . . . . .	40 - 12
FILTER, PRE- FUEL . . . . .	30 - 20	FRAME ASSEMBLY, HYDRO PUMP ( -4000) . . . . .	80 - 40
FILTER, WATER . . . . .	140 - 13	FRAME ASSEMBLY, HYDRO PUMP (4001- ) . . . . .	80 - 42
FINAL DRIVE . . . . .	50 - 12	FRAME SUPPORT, COOLING . . . . .	20 - 50
FINAL DRIVE AXLE, GEAR AND BEARINGS . . . . .	50 - 14	FRAME, CONVEYOR DOOR . . . . .	160 - 16
FINAL DRIVE HOUSING AND BEARING CAP. . . . .	50 - 13	FRAME, DUCT SUPPORT. . . . .	150 - 16
FINAL DRIVE PINION, DRIVE SHAFTS AND BEARINGS . . . . .	50 - 16	FRAME, ENGINE SIDE . . . . .	80 - 14
FIRE EXTINGUISHER . . . . .	80 - 20	FRAME, MAIN . . . . .	80 - 10
FIRE EXTINGUISHER . . . . .	80 - 22	FRAME, PICKING UNIT BOTTOM (PRO-12 UNIT) . . . . .	110 - 12
FITTINGS, CYLINDER BLOCK . . . . .	20 - 2	FRAME, PICKING UNIT BOTTOM (PRO-16 UNIT) . . . . .	110 - 14
FIXTURE, FEEDBACK SENSOR, ROW-TRAK. . . . .	60 - 28	FRAME, PLATFORM (SERIAL NO. -XXXX) . . . . .	90 - 2
FLANGE, PICKER BAR DRUM . . . . .	120 - 22	FRAME, PLATFORM (SERIAL NO.XXXX- ) . . . . .	90 - 4
FLAP MONITOR . . . . .	40 - 27	FRAMES, UNIT LIFT . . . . .	100 - 2
FLAP, BASKET DOOR . . . . .	160 - 22	FRONT AXLE . . . . .	80 - 10
FLAP, LOWER BASKET. . . . .	160 - 8	FRONT CHASSIS WIRING HARNESS . . . . .	40 - 14
FLOOR AND DOOR CONVEYOR HYDRAULIC LINES . . . . .	70 - 38	FRONT DRUM PRESSURE PLATE (PRO-12 18S) . . . . .	110 - 20
FLOOR BRUSH BRACKETS . . . . .	160 - 32	FRONT DRUM PRESSURE PLATE (PRO-16 20S) . . . . .	110 - 22
FLOOR BRUSHES . . . . .	160 - 34	FRONT OIL SEAL AND TIMING GEAR COVER . . . . .	20 - 19
FLOOR CONNECTORS AND TERMINALS . . . . .	40 - 66	FRONT WATER MANIFOLD . . . . .	20 - 42
FLOOR MAT. . . . .	90 - 18	FRONT WHEEL SHIELD, LH, 4 ROW WITH DUAL WHEELS (PIN -2100) . . . . .	80 - 54
FLOOR SWITCH CONNECTOR, MOMENTARY . . . . .	40 - 64	FRONT WHEEL SHIELD, LH, 4 ROW WITH DUAL WHEELS (PIN 2101- ) . . . . .	80 - 56
FLOOR, BASKET . . . . .	160 - 4	FRONT WHEEL SHIELD, RH . . . . .	80 - 52
FLOOR, PLATFORM . . . . .	90 - 1	FUEL CHECK VALVE . . . . .	30 - 20
FLOORS, OUTSIDE OF CAB (38" & 40"/64" SKIP ROW) ( -2100) . . . . .	90 - 12	FUEL COOLER KIT. . . . .	20 - 1
FLOORS, OUTSIDE OF CAB (38" & 40"/64" SKIP ROW) (2101- ) . . . . .	90 - 10	FUEL FILTER . . . . .	30 - 20
FLOORS, OUTSIDE OF CAB (6 ROW) (5 ROW 36,38 W/DUALS)( -2100) . . . . .	90 - 8	FUEL FILTER BASE . . . . .	30 - 20
FLOORS, OUTSIDE OF CAB (6 ROW) (5 ROW 36,38 W/DUALS)(2101- ) . . . . .	90 - 6	FUEL FILTER LINES . . . . .	30 - 20
FLOORS, OUTSIDE OF CAB ( -2100) (SKIP ROW 30"-32"/60" OR 64") . . . . .	90 - 16	FUEL GAUGE . . . . .	40 - 36
FLOORS, OUTSIDE OF CAB ( -2100) (4 ROW & 5 ROW 34" SINGLE WHL.) . . . . .	90 - 12	FUEL INJ LINES (6081HN001). . . . .	30 - 14
FLOORS, OUTSIDE OF CAB ( -2100) (4 ROW DUAL WHEELS W/ADD-ON PLATFORM). . . . .	90 - 16	FUEL INJECTION NOZZLE . . . . .	30 - 19
FLOORS, OUTSIDE OF CAB ( -2100) (4 ROW SINGLE WHEELS EXCEPT 34"). . . . .	90 - 16	FUEL INJECTION NOZZLES (ROBERT BOSCH) (6081HN001) . . . . .	30 - 14
FLOORS, OUTSIDE OF CAB ( -2100) (5 ROW 30",32",34" W/DUALS & PLATFORM) . . . . .	90 - 16	FUEL INJECTION PUMP . . . . .	30 - 16
FLOORS, OUTSIDE OF CAB (2101- ) (SKIP ROW 30"-32"/60" OR 64") . . . . .	90 - 14	FUEL INJECTION PUMP ACCESS COVER (S/N 4001- ) . . . . .	40 - 44
FLOORS, OUTSIDE OF CAB (2101- ) (4 ROW & 5 ROW 34" SINGLE WHL.) . . . . .	90 - 10	FUEL INJECTION PUMP HOUSING CONNECTORS . . . . .	30 - 26
FLOORS, OUTSIDE OF CAB (2101- ) (4 ROW DUAL WHEELS W/ADD-ON PLATFORM). . . . .	90 - 14	FUEL LEAK-OFF LINES. . . . .	30 - 16
FLOORS, OUTSIDE OF CAB (2101- ) (4 ROW SINGLE WHEELS EXCEPT 34"). . . . .	90 - 14	FUEL LEAK-OFF LINES (6081HN001) . . . . .	30 - 14
FLOORS, OUTSIDE OF CAB (2101- ) (5 ROW 30",32",34" W/DUALS & PLATFORM) . . . . .	90 - 14	FUEL SENDER AND REAR LIGHTS WIRING HARNESS . . . . .	40 - 8
FLUIDS, SPINDLE CLEANER AND WETTING AGENT (SERIAL NO. -4000) . . . . .	140 - 2	FUEL SENDER AND REAR LIGHTS WIRING HARNESS . . . . .	40 - 9
FLUIDS, SPINDLE CLEANER AND WETTING AGENT (SERIAL NO.4001- ) . . . . .	140 - 4	FUEL SHUT-OFF SOLENOID . . . . .	30 - 16
FLUSH SYSTEM SWITCH, FOOT CONTROL . . . . .	40 - 12	FUEL TANK WITH FUEL COOLER (SERIAL NO. 4001- ) . . . . .	30 - 12
FLUSH WATER LINES AND FITTINGS . . . . .	140 - 18	FUEL TANK WITHOUT FUEL COOLER (SERIAL NO. -4000) . . . . .	30 - 10
FLYWHEEL (HN001) . . . . .	20 - 27	FUEL TEMPERATURE SENSOR. . . . .	30 - 16
		FUEL TRANSFER PUMP (ROBERT BOSCH) . . . . .	30 - 27
		FUSE AND RELAY BLOCK . . . . .	40 - 63
		FUSES AND RELAYS, CONSOLE . . . . .	40 - 30
		FUSES, RELAYS AND CIRCUIT BREAKERS . . . . .	40 - 40

## ALPHABETICAL INDEX - CONTINUED

	PAGE		PAGE
<b>G</b>			
GASKET KIT, CYLINDER HEAD . . . . .	20 - 4	HANDLE BASKET RESET. . . . .	160 - 48
GASKET KIT, ENGINE REBUILD . . . . .	20 - 4	HANDLE, DOOR . . . . .	90 - 28
GASKET KIT, SHORT BLOCK . . . . .	20 - 4	HANDLE, HYDROSTATIC CONTROL . . . . .	90 - 46
GASKET, CYLINDER HEAD . . . . .	20 - 22	HANDLE, UNIT DOOR . . . . .	110 - 30
GASKET, INTAKE MANIFOLD (6081HN003) . . . . .	30 - 18	HANDLE, UNIT DOOR, PRO-12 - 18S (2001 - ) . . . . .	110 - 28
GASKET, OIL FILTER HOUSING. . . . .	20 - 32	HANDRAIL, PLATFORM (4 ROW WITH DUALS) . . . . .	90 - 20
GASKET, OIL PAN . . . . .	20 - 34	HANDRAILS, BASKET LID . . . . .	160 - 52
GASKET, OIL PUMP . . . . .	20 - 30	HANDRAILS, PLATFORM . . . . .	90 - 22
GASKET, OIL PUMP INTAKE . . . . .	20 - 29	HANGER, PICKING UNIT . . . . .	110 - 10
GASKET, REAR OIL SEAL . . . . .	20 - 15	HARDWARE KIT, COMPRESSOR . . . . .	90 - 68
GASKET, ROCKER ARM COVER . . . . .	20 - 26	HARDWARE, PREFERRED METRIC . . . . .	180 - 2
GASKET, TURBOCHARGER . . . . .	30 - 6	HARDWARE, PREFERRED METRIC . . . . .	180 - 3
GASKET, WATER MANIFOLD . . . . .	20 - 42	HARNESS, BASKET LAMP WIRING . . . . .	40 - 24
GASKET, WATER PUMP . . . . .	20 - 40	HARNESS, CAB LAMP WIRING . . . . .	40 - 25
GASKETS, EXHAUST MANIFOLD . . . . .	30 - 25	HARNESS, CHASSIS WIRING ( -4000) . . . . .	40 - 16
GAUGE CLUSTER CONNECTOR . . . . .	40 - 61	HARNESS, CHASSIS WIRING (4001- ) . . . . .	40 - 34
GAUGES, DOFFER . . . . .	120 - 28	HARNESS, CHASSIS WIRING (4001-9000) . . . . .	40 - 18
GAUGES, MONITOR . . . . .	40 - 36	HARNESS, CHASSIS WIRING (9001- ) . . . . .	40 - 20
GEAR BOX, SKIP ROW. . . . .	120 - 6	HARNESS, CONSOLE WIRING . . . . .	40 - 32
GEAR CASE HUB, LOWER . . . . .	120 - 10	HARNESS, DOOR CONTACT SWITCH WIRING . . . . .	40 - 11
GEAR CASE, PICKING UNIT . . . . .	120 - 8	HARNESS, FRONT CHASSIS WIRING . . . . .	40 - 14
GEAR, CAMSHAFT . . . . .	20 - 20	HARNESS, HYDRO PUMP AND RESERVOIR WIRING . . . . .	40 - 13
GEAR, COMPACTOR DRIVE . . . . .	160 - 36	HARNESS, PICKING UNIT WIRING . . . . .	40 - 28
GEAR, DOFFER . . . . .	120 - 24	HARNESS, PLATFORM WIRING . . . . .	40 - 22
GEAR, DOFFER DRIVE IDLER . . . . .	120 - 29	HARNESS, REAR LIGHTS AND FUEL SENDER WIRING . . . . .	40 - 8
GEAR, DOFFER IDLER. . . . .	120 - 14	HARNESS, REAR LIGHTS AND FUEL SENDER WIRING . . . . .	40 - 9
GEAR, FINAL DRIVE . . . . .	50 - 14	HARNESS, TETHER SWITCH (NO. 3 OR 4 UNIT) . . . . .	40 - 26
GEAR, INJECTION PUMP . . . . .	30 - 16	HARNESS, UNIT SPEED SYNCHRONIZATION (SERVICE TOOL) . . . . .	40 - 28
GEAR, OIL PUMP DRIVE . . . . .	20 - 11	HEAD BOLT KIT . . . . .	20 - 22
GEAR, OIL PUMP DRIVE . . . . .	20 - 30	HEAD, CYLINDER . . . . .	20 - 22
GEAR, STARTER (HN001) . . . . .	20 - 27	HEAD, PICKER DRUM . . . . .	120 - 16
GEAR, STARTER (HN001) . . . . .	20 - 28	HEADER, PRE-FUEL FILTER . . . . .	30 - 20
GEAR, WATER PUMP . . . . .	20 - 40	HEADLIGHT AND LIGHT BAR (PIN -2100) . . . . .	90 - 79
GEARS, DIFFERENTIAL . . . . .	50 - 8	HEADLIGHT AND LIGHT BAR (PIN 2101- ) . . . . .	90 - 80
GEARS, DRUM IDLER . . . . .	120 - 12	HEADLINER, CAB ROOF . . . . .	90 - 33
GEARS, PICKER BAR . . . . .	120 - 20	HEAT EXCHANGER CORES . . . . .	20 - 1
GEARS, TRANSMISSION INPUT . . . . .	50 - 4	HEAT EXCHANGER HOODS (SERIAL NO. -4000) . . . . .	80 - 23
GEARS, TRANSMISSION INTERMEDIATE . . . . .	50 - 6	HEAT EXCHANGER HOODS (SERIAL NO. 4001- ) . . . . .	80 - 24
GEARS, UPPER HOUSING DRUM DRIVE . . . . .	120 - 14	HEAT SHIELD, AIR TUBE . . . . .	30 - 1
GRATE, FINGER, BASKET EXTENSION LID . . . . .	160 - 38	HEATER CONTROL VALVE AND HOSES . . . . .	90 - 62
GRATE, STALKLIFTER . . . . .	110 - 32	HEATER, ENGINE COOLANT . . . . .	40 - 3
GREASE CHIME CONNECTOR . . . . .	40 - 70	HEIGHT SENSING HOSES, TO TOP OF UNIT (4 OR 5 ROW) . . . . .	70 - 16
GREASE MANIFOLD. . . . .	130 - 11	HEIGHT SENSING HYDRAULIC LINE AND HOSES (TOP OF UNIT TO VALVE) . . . . .	70 - 26
GREASE PUMP SYSTEM (SERIAL NUMBER -4000) . . . . .	130 - 6	HEIGHT SENSING LINKAGE AND VALVE. . . . .	110 - 34
GREASE TANK (SERIAL NO. -4000) . . . . .	130 - 2	HEIGHT SENSING VALVE (IN-LINE UNIT) . . . . .	70 - 25
GREASE TANK (SERIAL NO. 4001- ) . . . . .	130 - 4	HINGE, CONVEYOR DOOR . . . . .	160 - 18
GREEN FLUSH WATER LINES . . . . .	140 - 18	HOLDER, MOISTENER PAD. . . . .	140 - 20
GRID BARS AND SUPPORTS, PICKING UNIT (PRO-12 18S) . . . . .	110 - 16	HOODS, ENGINE . . . . .	80 - 30
GRID BARS AND SUPPORTS, PICKING UNIT (PRO-16 20S) . . . . .	110 - 18	HOODS, HEAT EXCHANGER (SERIAL NO. -4000) . . . . .	80 - 23
GROMMETS, UNIT CABINET . . . . .	110 - 38	HOODS, HEAT EXCHANGER (SERIAL NO. 4001- ) . . . . .	80 - 24
GROUND WIRE, A/C ELECTRIC CLUTCH . . . . .	90 - 67	HORN . . . . .	40 - 49
GUARD, TANK. . . . .	80 - 38	HORN CONNECTOR . . . . .	40 - 65
GUIDANCE SYSTEM PROBE ASSEMBLY . . . . .	60 - 30		
GUIDE, PLANT . . . . .	110 - 32		
<b>H</b>			
HANDBRAKE LEVER . . . . .	60 - 19		

## ALPHABETICAL INDEX - CONTINUED

	PAGE		PAGE
HORN CONNECTOR, 3-SECOND AND PULSING . . .	40 - 70	HOSES, WATER, MOISTENER COLUMN (CLEAR). . .	140 - 16
HORN SWITCH . . . . .	40 - 4	HOUSING CONNECTORS, FUEL INJECTION PUMP. . .	30 - 26
HORN, CHIME. . . . .	40 - 30	HOUSING, FAN . . . . .	150 - 2
HOSE, ACCUMULATOR HYDRAULIC LINES (S/N 2101-6000). . . . .	70 - 34	HOUSING, FINAL DRIVE . . . . .	50 - 13
HOSE, ACCUMULATOR HYDRAULIC LINES (S/N 6001- ). . . . .	70 - 36	HOUSING, HYDROSTATIC PUMP . . . . .	50 - 32
HOSE, BASKET DOOR OPEN-CLOSE HYDRAULIC (S/N 2101-6000). . . . .	70 - 34	HOUSING, MANIFOLD (WATER, GREASE AND HYDRAULIC) . . . . .	140 - 14
HOSE, BASKET DOOR OPEN-CLOSE HYDRAULIC (S/N 6001- ). . . . .	70 - 36	HOUSING, MONITOR. . . . .	90 - 42
HOSE, BASKET EXTENSION HYDRAULIC . . . . .	70 - 32	HOUSING, OIL FILTER . . . . .	20 - 32
HOSE, BASKET RAISE HYDRAULIC. . . . .	70 - 30	HOUSING, PICKING UNIT . . . . .	110 - 1
HOSE, FLOOR AND DOOR CONVEYOR HYDRAULIC . . . . .	70 - 38	HOUSING, PICKING UNIT UPPER (PRO-12 UNIT) . . . . .	110 - 2
HOSE, HEIGHT SENSING HYDRAULIC (TOP OF UNIT TO VALVE) . . . . .	70 - 26	HOUSING, PICKING UNIT UPPER (PRO-16 UNIT) . . . . .	110 - 4
HOSE, HYDRAULIC SUCTION AND PRESSURE . . . . .	70 - 6	HOUSING, REAR OIL SEAL . . . . .	20 - 15
HOSE, LIFT ARM LUBRICATION . . . . .	100 - 4	HOUSING, THERMOSTAT, FRONT. . . . .	20 - 42
HOSE, LUBRICATION FILL . . . . .	130 - 18	HOUSING, TRANSMISSION. . . . .	50 - 10
HOSE, LUBRICATION MANIFOLD. . . . .	130 - 11	HOUSING, UPPER DOFFER ADJUSTING . . . . .	120 - 24
HOSE, LUBRICATION PUMP (SERIAL NUMBER -4000) . . . . .	130 - 6	HUB, FLYWHEEL (HN001) . . . . .	20 - 27
HOSE, LUBRICATION TANK (SERIAL NO. -4000) . . . . .	130 - 2	HUB, FLYWHEEL (HN001) . . . . .	20 - 28
HOSE, LUBRICATION TANK (SERIAL NO. 4001- ). . . . .	130 - 4	HUB, LOWER GEAR CASE . . . . .	120 - 10
HOSE, ROTARY SCREEN . . . . .	20 - 52	HUB, REAR WHEEL . . . . .	80 - 15
HOSE, ROW-TRAK STEERING VALVE . . . . .	60 - 26	HYDRAULIC CONTROL VALVE, UNIT LIFT . . . . .	70 - 24
HOSE, UNIT LIFT HYDRAULIC, W/INNER UNIT HEIGHT SENSING . . . . .	70 - 22	HYDRAULIC CONTROL, BASKET . . . . .	70 - 15
HOSE, UNIT LUBRICATION. . . . .	130 - 12	HYDRAULIC CONTROL, CONVEYOR . . . . .	70 - 12
HOSE, WATER PUMP (SERIAL NO. -9045) . . . . .	140 - 6	HYDRAULIC CYLINDER, 2-1/2" X 12" (EATON) . . . . .	70 - 42
HOSE, WATER PUMP (SERIAL NO. 9046- ). . . . .	140 - 8	HYDRAULIC CYLINDER, 3-1/2" X 24" (BASKET RAISE-UNLOAD) . . . . .	70 - 40
HOSES, AIR CONDITIONING (S/N -4000) . . . . .	90 - 70	HYDRAULIC CYLINDER, 3-3/4" X 8" (UNIT LIFT) . . . . .	70 - 41
HOSES, AIR CONDITIONING (S/N 4001- ). . . . .	90 - 72	HYDRAULIC HOSE, ROW-TRAK STEERING VALVE . . . . .	60 - 26
HOSES, FLUSH WATER, GREEN . . . . .	140 - 18	HYDRAULIC HOSES, LUBRICATION PUMP (SERIAL NUMBER -4000). . . . .	130 - 6
HOSES, HEATER . . . . .	90 - 62	HYDRAULIC HOSES, UNIT LIFT AND HEIGHT SENSING (4 OR 5 ROW) . . . . .	70 - 16
HOSES, HYDRAULIC OIL COOLER . . . . .	70 - 3	HYDRAULIC HOSES, UNIT LIFT CONTROL VALVE PRESSURE. . . . .	70 - 20
HOSES, HYDRAULIC OIL COOLER . . . . .	70 - 4	HYDRAULIC HOSES, UNIT LIFT W/INNER UNIT HEIGHT SENSING. . . . .	70 - 22
HOSES, HYDRAULIC UNIT LIFT AND HEIGHT SENSING (4 OR 5 ROW) . . . . .	70 - 16	HYDRAULIC LIFT RETURN HOSES AND LINES. . . . .	70 - 18
HOSES, HYDRAULIC UNIT LIFT CONTROL VALVE PRESSURE . . . . .	70 - 20	HYDRAULIC LINES, BASKET DOOR OPEN-CLOSE AND ACCUMULATOR (S/N 2101-6000). . . . .	70 - 34
HOSES, HYDRAULIC UNIT LIFT RETURN . . . . .	70 - 18	HYDRAULIC LINES, BASKET DOOR OPEN-CLOSE AND ACCUMULATOR (S/N 6001- ). . . . .	70 - 36
HOSES, HYDROSTATIC ( -4000). . . . .	50 - 20	HYDRAULIC LINES, BASKET EXTENSION . . . . .	70 - 32
HOSES, HYDROSTATIC (4001-9000) . . . . .	50 - 22	HYDRAULIC LINES, BASKET RAISE . . . . .	70 - 30
HOSES, HYDROSTATIC (9001- ). . . . .	50 - 24	HYDRAULIC LINES, COMPACTOR. . . . .	70 - 28
HOSES, LUBRICATION TRANSFER PUMP . . . . .	130 - 14	HYDRAULIC LINES, FLOOR AND DOOR CONVEYOR . . . . .	70 - 38
HOSES, LUBRICATION TRANSFER PUMP . . . . .	130 - 16	HYDRAULIC LINES, HEIGHT SENSING (TOP OF UNIT TO VALVE) . . . . .	70 - 26
HOSES, RADIATOR . . . . .	20 - 64	HYDRAULIC MODULE OUTER PANELS AND DOORS ( -4000) . . . . .	80 - 48
HOSES, RADIATOR . . . . .	20 - 65	HYDRAULIC MODULE PANELS AND DOORS (4001- ). . . . .	80 - 50
HOSES, STEERING HYDRAULIC (S/N -6000) . . . . .	60 - 6	HYDRAULIC MOTOR ASSY., 100 CC SAUER-SUNDSTRAND (PROPULSION) . . . . .	50 - 46
HOSES, STEERING HYDRAULIC (S/N 6001- ). . . . .	60 - 8	HYDRAULIC MOTOR ASSY., 75 CC SAUER-SUNDSTRAND (PROPULSION) . . . . .	50 - 40
HOSES, WATER TANK (SERIAL NO. -4000) . . . . .	140 - 2	HYDRAULIC MOTOR ASSY., 75 CC SAUER-SUNDSTRAND (UNIT DRIVE) . . . . .	50 - 42
HOSES, WATER TANK (SERIAL NO. 4001- ). . . . .	140 - 4	HYDRAULIC MOTOR, TRANSMISSION DRIVE . . . . .	50 - 2
HOSES, WATER VALVE . . . . .	140 - 14	HYDRAULIC OIL COOLER AND HOSES . . . . .	70 - 3
		HYDRAULIC OIL COOLER AND HOSES . . . . .	70 - 4
		HYDRAULIC OIL FILTER . . . . .	70 - 6
		HYDRAULIC OIL, HY-GARD (S/N -XXXX) . . . . .	70 - 1



## ALPHABETICAL INDEX - CONTINUED

	PAGE		PAGE
HYDRAULIC OIL, HY-GARD (S/N XXXX- ) . . . . .	70 - 2	INDICATOR LIGHTS . . . . .	40 - 36
HYDRAULIC PUMP (45 CM3 (2.75 CU. IN.)) . . . . .	70 - 10	INJECTION PUMP ACCESS COVER . . . . .	20 - 19
HYDRAULIC PUMP DRIVE . . . . .	70 - 5	INJECTION PUMP GEAR . . . . .	30 - 16
HYDRAULIC PUMP, SUCTION AND PRESSURE HOSES . . . . .	70 - 6	INNER ROOF AND COVERS . . . . .	90 - 32
HYDRAULIC RESERVOIR . . . . .	70 - 6	INPUT SHAFT, TRANSMISSION . . . . .	50 - 4
HYDRAULIC RESERVOIR (S/N -XXXX) . . . . .	70 - 1	INSERTS, VALVE SEAT . . . . .	20 - 22
HYDRAULIC RESERVOIR (S/N XXXX- ) . . . . .	70 - 2	INSIDE CAB MIRROR . . . . .	90 - 77
HYDRAULIC STEERING LINES AND HOSES (S/N -6000) . . . . .	60 - 6	INSULATION, CAB INTERIOR . . . . .	90 - 34
HYDRAULIC STEERING LINES AND HOSES (S/N 6001- ) . . . . .	60 - 8	INTAKE MANIFOLD (6081HN003) . . . . .	30 - 18
HYDRO HANDLE CONNECTOR. . . . .	40 - 61	INTAKE MANIFOLD TEMPERATURE SENSOR . . . . .	30 - 24
HYDRO PUMP MODULE ASSEMBLY (4001- ) . . . . .	80 - 42	INTAKE VALVES . . . . .	20 - 22
HYDRO PUMP MODULE FRAME ASSEMBLY ( -4000) . . . . .	80 - 40	INTAKE, ENGINE OIL PUMP . . . . .	20 - 29
HYDRO PUMP SUPPORT ASSEMBLY (SERIAL NO. -4000) . . . . .	80 - 44	INTERIOR PANELS, CAB . . . . .	90 - 34
HYDRO PUMPS AND RESERVOIR WIRING HARNESS	40 - 13	INTERMEDIATE SHAFT, TRANSMISSION . . . . .	50 - 6
HYDROSTATIC CIRCUIT ( -4000) . . . . .	50 - 20	ISOLATORS, CAB INTERIOR PANEL . . . . .	90 - 34
HYDROSTATIC CIRCUIT (4001-9000) . . . . .	50 - 22	<b>J</b>	
HYDROSTATIC CIRCUIT (9001- ) . . . . .	50 - 24	JACKSHAFT, UNIT DRIVE. . . . .	120 - 2
HYDROSTATIC CONTROL CABLE. . . . .	50 - 44	JET POST TRANSITION ELBOW . . . . .	150 - 6
HYDROSTATIC CONTROL HANDLE . . . . .	90 - 46	JETS, PISTON COOLING . . . . .	20 - 2
HYDROSTATIC PUMP ( -4000) . . . . .	50 - 20	<b>K</b>	
HYDROSTATIC PUMP (4001-9000) . . . . .	50 - 22	KEY SWITCH CONNECTOR. . . . .	40 - 70
HYDROSTATIC PUMP (9001- ) . . . . .	50 - 24	KEY, DAMPER . . . . .	20 - 11
HYDROSTATIC CONTROL CABLE. . . . .	50 - 44	KIT, COMPRESSOR HARDWARE . . . . .	90 - 68
HYDROSTATIC CONTROL HANDLE . . . . .	90 - 46	KIT, ECU DIAGNOSTIC (SERIAL NO. -4000) . . . . .	40 - 72
HYDROSTATIC PUMP ( -4000) . . . . .	50 - 20	KIT, ELECTRICAL CONNECTOR SERVICE . . . . .	40 - 54
HYDROSTATIC PUMP (4001-9000) . . . . .	50 - 22	KIT, ENGINE OVERHAUL . . . . .	20 - 6
HYDROSTATIC PUMP (9001- ) . . . . .	50 - 24	KIT, HEAD BOLT . . . . .	20 - 22
HYDROSTATIC PUMP AUXILIARY PUMP MOUNTING . . . . .	50 - 38	KIT, SPRAY VALVE . . . . .	140 - 22
HYDROSTATIC PUMP CONTROL LEVERS AND RODS	50 - 15	KIT, STEERING CYLINDER SEAL (ADJUSTABLE AXLE) (FOR CYLINDER RE155989) . . . . .	60 - 12
HYDROSTATIC PUMP DISPLACEMENT CONTROL . . . . .	50 - 34	KIT, STEERING CYLINDER SEAL (ADJUSTABLE AXLE) (FOR CYLINDER RE62060) . . . . .	60 - 11
HYDROSTATIC PUMP DRIVE . . . . .	70 - 5	KIT, TERMINAL AND WIRING . . . . .	40 - 52
HYDROSTATIC PUMP DRIVE (SERIAL NO. -4000) . . . . .	50 - 18	KIT, WATER PUMP SEAL . . . . .	20 - 40
HYDROSTATIC PUMP DRIVE (SERIAL NO. 4001- ) . . . . .	50 - 19	KNEE AND KNUCKLE, REAR AXLE . . . . .	80 - 6
HYDROSTATIC PUMP END CAP . . . . .	50 - 36	KNOB, OFFSET, ROW-TRAK . . . . .	60 - 33
HYDROSTATIC PUMP HOUSING, SWASHPLATE AND CYLINDER BLOCK . . . . .	50 - 32	KNOB, OFFSET, ROW-TRAK . . . . .	60 - 34
HYDROSTATIC PUMP SHAFT AND SERVO ASSY. . . . .	50 - 28	<b>L</b>	
HYDROSTATIC PUMP VALVES, PLUGS AND SEALS . . . . .	50 - 30	LADDER DUCT . . . . .	150 - 14
<b>I</b>		LADDER, PLATFORM . . . . .	90 - 22
IDLER ARM, ROTARY SCREEN DRIVE. . . . .	20 - 60	LADDER, PLATFORM (4 ROW WITH DUALS) . . . . .	90 - 20
IDLER ARM, ROTARY SCREEN DRIVE. . . . .	20 - 62	LADDER, PLATFORM FRAME (SERIAL NO. -XXXX) . . . . .	90 - 2
IDLER GEAR, DOFFER DRIVE . . . . .	120 - 29	LADDER, PLATFORM FRAME (SERIAL NO. XXXX- ) . . . . .	90 - 4
IDLER GEARS, DRUM . . . . .	120 - 12	LAMP WIRING HARNESS, CAB . . . . .	40 - 25
IDLER PULLEY, AIR CONDITIONER COMPRESSOR (S/N 4001- ) . . . . .	40 - 43	LAMP, FIELD (PIN -2100) . . . . .	90 - 79
IDLER, ALTERNATOR AND A/C COMPRESSOR DRIVE BELT (S/N -4000) . . . . .	40 - 42	LAMP, FIELD (PIN 2101- ) . . . . .	90 - 80
IMPELLER, WATER PUMP . . . . .	20 - 40	LAMP, WARNING (SERIAL NO. -4000) . . . . .	40 - 6
IMPELLER, WATER PUMP (S/N -9045) . . . . .	140 - 10	LAMPS AND WIRING HARNESS, BASKET . . . . .	40 - 24
IMPELLER, WATER PUMP (S/N 9046- ) . . . . .	140 - 11	LATCH, BASKET EXTENSION . . . . .	160 - 48
		LATCH, DOOR . . . . .	90 - 28
		LATCH, MOISTENER COLUMN . . . . .	140 - 20
		LEVELER ASSY., HYDROSTATIC PUMP . . . . .	50 - 28

## ALPHABETICAL INDEX - CONTINUED

	PAGE		PAGE
LEVER, HANDBRAKE . . . . .	60 - 19	MANIFOLD, WATER . . . . .	140 - 14
LEVER, HEIGHT SENSING LINKAGE . . . . .	110 - 34	MANIFOLD, WATER, FRONT . . . . .	20 - 42
LEVERS, CONSOLE CONTROL . . . . .	90 - 48	MANIFOLDS, EXHAUST . . . . .	30 - 25
LEVERS, HYDROSTATIC PUMP CONTROL . . . . .	50 - 15	MASTER BRAKE CYLINDER . . . . .	60 - 16
LID ASSEMBLY, BASKET EXTENSION . . . . .	160 - 38	MAT, FLOOR . . . . .	90 - 18
LID EXTENSION, BASKET . . . . .	160 - 50	MDC KIT, HYDROSTATIC PUMP . . . . .	50 - 34
LIFT ARMS, UNIT . . . . .	100 - 4	MICROSWITCH CONNECTOR . . . . .	40 - 69
LIFT BRACKET, HYDROSTATIC PUMP . . . . .	50 - 36	MIRROR SUPPORTS . . . . .	90 - 78
LIFT CONTROL VALVE PRESSURE LINES . . . . .	70 - 20	MIRROR, REAR VIEW (INSIDE AND OUTSIDE) . . . . .	90 - 77
LIFT FRAMES, UNIT . . . . .	100 - 2	MODULE, DIODE . . . . .	40 - 62
LIFT HOSES, TO TOP OF UNIT (4 OR 5 ROW) . . . . .	70 - 16	MODULE, ENGINE CONTROLLER . . . . .	40 - 2
LIFT RETURN HYDRAULIC LINES . . . . .	70 - 18	MODULE, MONITOR LIGHT . . . . .	40 - 68
LIFT STRAPS, ENGINE . . . . .	20 - 21	MOISTENER COLUMN . . . . .	140 - 20
LIGHT BAR (PIN -2100) . . . . .	90 - 79	MOISTENER COLUMN WATER LINES (CLEAR) . . . . .	140 - 16
LIGHT BAR (PIN 2101- ) . . . . .	90 - 80	MOISTENER COLUMN WATER LINES, FLUSH (GREEN) . . . . .	140 - 18
LIGHT, DOME (ROCKER TYPE) . . . . .	40 - 10	MOMENTARY FLOOR SWITCH CONNECTOR . . . . .	40 - 64
LIGHT, FIELD (PIN -2100) . . . . .	90 - 79	MONITOR ASSEMBLY . . . . .	90 - 42
LIGHT, FIELD (PIN 2101- ) . . . . .	90 - 80	MONITOR GAUGES . . . . .	40 - 36
LIGHTER . . . . .	40 - 30	MONITOR LIGHT MODULES AND TACHOMETER CONNECTORS . . . . .	40 - 68
LIGHTS, INDICATOR . . . . .	40 - 36	MONITOR, FLAP . . . . .	40 - 27
LINE, BRAKE . . . . .	60 - 14	MONITOR, UNIT . . . . .	40 - 32
LINE, UNIT LUBRICATION . . . . .	130 - 12	MONITORING SYSTEM, BASKET FULL . . . . .	160 - 54
LINERS, CYLINDER . . . . .	20 - 10	MOTOR ASSY., HYDRAULIC, SAUER-SUNDSTRAND 100 CC (PROPULSION) . . . . .	50 - 46
LINES, AIR CONDITIONING (CAB ROOF) . . . . .	90 - 74	MOTOR ASSY., HYDRAULIC, SAUER-SUNDSTRAND 75 CC (PROPULSION) . . . . .	50 - 40
LINES, FUEL FILTER . . . . .	30 - 20	MOTOR ASSY., HYDRAULIC, SAUER-SUNDSTRAND 75 CC (UNIT DRIVE) . . . . .	50 - 42
LINES, FUEL INJ (6081HN001) . . . . .	30 - 14	MOTOR, COMPACTOR DRIVE . . . . .	160 - 36
LINES, FUEL LEAK-OFF (6081HN001) . . . . .	30 - 14	MOTOR, FLOOR AND DOOR CONVEYOR HYDRAULIC . . . . .	70 - 38
LINES, HYDROSTATIC ( -4000) . . . . .	50 - 20	MOTOR, STARTING . . . . .	40 - 46
LINES, HYDROSTATIC (4001-9000) . . . . .	50 - 22	MOTOR, TRANSMISSION DRIVE . . . . .	50 - 2
LINES, HYDROSTATIC (9001- ) . . . . .	50 - 24	MOTOR, UNIT DRIVE ( -4000) . . . . .	50 - 20
LINES, PRE-FUEL FILTER . . . . .	30 - 20	MOTOR, UNIT DRIVE (4001-9000) . . . . .	50 - 22
LINES, TURBOCHARGER OIL . . . . .	30 - 6	MOTOR, UNIT DRIVE (9001- ) . . . . .	50 - 24
LINES, WATER SYSTEM CONTROL . . . . .	140 - 14	MOTOR, WINDSHIELD WIPER . . . . .	90 - 76
LINES, WATER, MOISTENER COLUMN (CLEAR) . . . . .	140 - 16	MOUNTING FLANGE, AUXILIARY, HYDROSTATIC PUMP . . . . .	50 - 38
LINKAGE, HEIGHT SENSING . . . . .	110 - 34	MUD SCRAPERS . . . . .	80 - 19
LOWER GEAR CASE HUB . . . . .	120 - 10	MUFFLER . . . . .	30 - 8
LUBRICATION FILL HOSE . . . . .	130 - 18		
LUBRICATION HOSE, LIFT ARM . . . . .	100 - 4	<b>N</b>	
LUBRICATION MANIFOLD . . . . .	130 - 11	NEUTRAL START SAFETY SWITCH . . . . .	50 - 34
LUBRICATION PUMP . . . . .	130 - 19	NOZZLE, DUCT (30"-32"-40") . . . . .	150 - 10
LUBRICATION PUMP REPAIR KIT . . . . .	130 - 20	NOZZLE, DUCT (36"-38"-40") . . . . .	150 - 12
LUBRICATION PUMP SYSTEM (SERIAL NUMBER -4000) . . . . .	130 - 6	NOZZLE, FUEL INJECTION . . . . .	30 - 19
LUBRICATION TANK (SERIAL NO. -4000) . . . . .	130 - 2	NOZZLE, PICKING UNIT BOTTOM FRAME (PRO-12 UNIT) . . . . .	110 - 12
LUBRICATION TANK (SERIAL NO. 4001- ) . . . . .	130 - 4	NOZZLE, PICKING UNIT BOTTOM FRAME (PRO-16 UNIT) . . . . .	110 - 14
LUBRICATION TRANSFER PUMP . . . . .	130 - 14	NOZZLES, AIR DUCT . . . . .	150 - 6
LUBRICATION TRANSFER PUMP . . . . .	130 - 16	NOZZLES, FUEL INJECTION (ROBERT BOSCH) (6081HN001) . . . . .	30 - 14
		<b>O</b>	
<b>M</b>		OFFSET CONTROL, ROW-TRAK . . . . .	60 - 33
MAGNETIC PICK-UP . . . . .	20 - 18	OFFSET CONTROL, ROW-TRAK . . . . .	60 - 34
MAIN BEARING CAPS . . . . .	20 - 2	OIL COOLER . . . . .	20 - 1
MAIN BEARINGS . . . . .	20 - 14		
MAIN FRAME . . . . .	80 - 10		
MANIFOLD, A/C COMPRESSOR (S/N 4001- ) . . . . .	90 - 65		
MANIFOLD, AIR . . . . .	150 - 4		
MANIFOLD, BASKET HYDRAULIC . . . . .	70 - 6		
MANIFOLD, INTAKE (6081HN003) . . . . .	30 - 18		
MANIFOLD, LUBRICATION . . . . .	130 - 11		
MANIFOLD, UNIT LUBRICATION . . . . .	130 - 12		

## ALPHABETICAL INDEX - CONTINUED

	PAGE		PAGE
OIL COOLER ADAPTER . . . . .	20 - 70	PICK-UP, MAGNETIC . . . . .	20 - 18
OIL COOLER BYPASS ADAPTER . . . . .	20 - 69	PICKER BAR DRUM, STUD AND BEARING . . . . .	120 - 22
OIL COOLER BYPASS TUBES . . . . .	20 - 69	PICKER BAR JOURNAL . . . . .	120 - 16
OIL COOLER COVER . . . . .	20 - 70	PICKER BAR SPINDLE DRIVE SHAFT . . . . .	120 - 20
OIL COOLER TUBES . . . . .	20 - 70	PICKER BAR, SPINDLE AND WRENCH . . . . .	120 - 18
OIL COOLER, ENGINE . . . . .	20 - 70	PICKER DRUM HEAD AND CAM . . . . .	120 - 16
OIL COOLER, HYDRAULIC . . . . .	70 - 3	PICKING UNIT BOTTOM FRAME	
OIL COOLER, HYDRAULIC . . . . .	70 - 4	(PRO-12 UNIT) . . . . .	110 - 12
OIL FILTER BASE . . . . .	20 - 32	PICKING UNIT BOTTOM FRAME	
OIL FILTER BYPASS VALVE . . . . .	20 - 32	(PRO-16 UNIT) . . . . .	110 - 14
OIL FILTER HOUSING . . . . .	20 - 32	PICKING UNIT GEAR CASE . . . . .	120 - 8
OIL FILTER HOUSING GASKET . . . . .	20 - 32	PICKING UNIT GRID BARS AND SUPPORTS	
OIL FILTER, ENGINE . . . . .	20 - 32	(PRO-12 18S) . . . . .	110 - 16
OIL FILTER, HYDRAULIC . . . . .	70 - 6	PICKING UNIT GRID BARS AND SUPPORTS	
OIL LINES, TURBOCHARGER . . . . .	30 - 6	(PRO-16 20S) . . . . .	110 - 18
OIL PAN . . . . .	20 - 34	PICKING UNIT HANGER . . . . .	110 - 10
OIL PRESSURE REGULATING VALVE . . . . .	20 - 32	PICKING UNIT HOUSING . . . . .	110 - 1
OIL PRESSURE REGULATING VALVE . . . . .	20 - 70	PICKING UNIT POSTS (PRO-12, 18S) . . . . .	110 - 6
OIL PRESSURE SWITCH, ENGINE . . . . .	20 - 36	PICKING UNIT POSTS (PRO-16 20S) . . . . .	110 - 8
OIL PUMP DRIVE GEAR . . . . .	20 - 11	PICKING UNIT UPPER HOUSING	
OIL PUMP DRIVE GEAR . . . . .	20 - 30	(PRO-12 UNIT) . . . . .	110 - 2
OIL PUMP GASKET . . . . .	20 - 30	PICKING UNIT UPPER HOUSING	
OIL PUMP INTAKE . . . . .	20 - 29	(PRO-16 UNIT) . . . . .	110 - 4
OIL PUMP INTAKE GASKET . . . . .	20 - 29	PICKING UNIT WIRING HARNESS . . . . .	40 - 28
OIL PUMP, ENGINE . . . . .	20 - 30	PIN, REAR AXLE PIVOT . . . . .	80 - 1
OIL RESERVOIR, HYDRAULIC		PINION, FINAL DRIVE . . . . .	50 - 16
(S/N -XXXX) . . . . .	70 - 1	PINION, PICKING UNIT GEAR CASE . . . . .	120 - 8
OIL RESERVOIR, HYDRAULIC		PIPE, EXHAUST . . . . .	30 - 8
(S/N XXXX- ) . . . . .	70 - 2	PISTON COOLING JETS . . . . .	20 - 2
OIL SEAL, FRONT AND TIMING GEAR COVER . . . . .	20 - 19	PISTON KIT, HYDROSTATIC PUMP SERVO . . . . .	50 - 28
OIL SEAL, REAR . . . . .	20 - 15	PISTON RINGS . . . . .	20 - 10
OIL SEAL, WATER PUMP . . . . .	20 - 40	PISTON, ENGINE . . . . .	20 - 10
OIL, ENGINE . . . . .	20 - 38	PISTON, HYDROSTATIC PUMP . . . . .	50 - 32
OIL, HY-GARD HYDRAULIC/TRANSMISSION		PIVOT PLATE, DUCT (30"-32"-40") . . . . .	150 - 10
(S/N -XXXX) . . . . .	70 - 1	PIVOT PLATE, DUCT (36"-38"-40") . . . . .	150 - 12
OIL, HY-GARD HYDRAULIC/TRANSMISSION		PIVOT SUPPORT, REAR AXLE (FRONT) . . . . .	80 - 2
(S/N XXXX- ) . . . . .	70 - 2	PIVOT SUPPORT, REAR AXLE (REAR) . . . . .	80 - 4
OPERATOR'S SEAT AND BACKREST . . . . .	90 - 52	PLANT GUIDE . . . . .	110 - 32
ORIFICE, UNIT LUBRICATION . . . . .	130 - 12	PLATE, FRONT DRUM PRESSURE (PRO-12 18S) . . . . .	110 - 20
OUTSIDE MIRRORS . . . . .	90 - 77	PLATE, FRONT DRUM PRESSURE (PRO-16 20S) . . . . .	110 - 22
OUTTEXT . . . . .	70 - 11	PLATE, PARK BRAKE COVER . . . . .	90 - 1
OVERFLOW TANK, RADIATOR . . . . .	20 - 66	PLATE, PICKING UNIT BOTTOM FRAME	
OVERHAUL KIT, ENGINE . . . . .	20 - 6	(PRO-12 UNIT) . . . . .	110 - 12
		PLATE, PICKING UNIT BOTTOM FRAME	
		(PRO-16 UNIT) . . . . .	110 - 14
<b>P</b>		PLATE, REAR DRUM PRESSURE (PRO-12 18S) . . . . .	110 - 24
		PLATE, REAR DRUM PRESSURE (PRO-16 20S) . . . . .	110 - 26
PAD, MOISTENER . . . . .	140 - 20	PLATFORM FLOOR . . . . .	90 - 1
PAN, OIL . . . . .	20 - 34	PLATFORM FLOORS, AROUND CAB	
PANEL, AIR CONDITIONER . . . . .	90 - 40	(38" & 40"/64" SKIP ROW) ( -2100) . . . . .	90 - 12
PANELS, CAB INTERIOR . . . . .	90 - 34	PLATFORM FLOORS, AROUND CAB	
PANELS, CHASSIS SIDE SHIELDING		(38" & 40"/64" SKIP ROW) (2101- ) . . . . .	90 - 10
(S.N. -4000) . . . . .	80 - 26	PLATFORM FLOORS, AROUND CAB	
PANELS, CHASSIS SIDE SHIELDING		(6 ROW) (5 ROW 36,38 W/DUALS)( -2100) . . . . .	90 - 8
(S.N. 4001- ) . . . . .	80 - 28	PLATFORM FLOORS, AROUND CAB	
PANELS, HYDRAULIC MODULE		(6 ROW) (5 ROW 36,38 W/DUALS)(2101- ) . . . . .	90 - 6
( -4000) . . . . .	80 - 48	PLATFORM FLOORS, AROUND CAB ( -2100)	
PANELS, HYDRAULIC MODULE		(SKIP ROW 30"-32"/60" OR 64") . . . . .	90 - 16
(4001- ) . . . . .	80 - 50	PLATFORM FLOORS, AROUND CAB ( -2100)	
PANELS, R.H. CAB . . . . .	90 - 27	(4 ROW & 5 ROW 34" SINGLE WHL.) . . . . .	90 - 12
PANELS, TUNNEL BOTTOM, CENTER . . . . .	80 - 34	PLATFORM FLOORS, AROUND CAB ( -2100)	
PANELS, TUNNEL BOTTOM, FRONT . . . . .	80 - 32	(4 ROW DUAL WHEELS W/ADD-ON PLATFORM) . . . . .	90 - 16
PANELS, TUNNEL BOTTOM, REAR . . . . .	80 - 36	PLATFORM FLOORS, AROUND CAB ( -2100)	
PARK BRAKE CABLE . . . . .	60 - 20	(4 ROW SINGLE WHEELS EXCEPT 34") . . . . .	90 - 16
PEDAL ASSEMBLY, PARK BRAKE . . . . .	60 - 19	PLATFORM FLOORS, AROUND CAB ( -2100)	
PEDALS, BRAKE . . . . .	60 - 18	(5 ROW 30",32",34" W/DUALS & PLATFORM) . . . . .	90 - 16
PEDESTAL, SEAT SUSPENSION . . . . .	90 - 60		

## ALPHABETICAL INDEX - CONTINUED

	PAGE		PAGE
PLATFORM FLOORS, AROUND CAB (2101- ) (SKIP ROW 30"-32"/60" OR 64") . . . . .	90 - 14	PUMP VALVES, HYDROSTATIC . . . . .	50 - 30
PLATFORM FLOORS, AROUND CAB (2101- ) (4 ROW & 5 ROW 34" SINGLE WHL.) . . . . .	90 - 10	PUMP WIRING HARNESS, HYDRO . . . . .	40 - 13
PLATFORM FLOORS, AROUND CAB (2101- ) (4 ROW DUAL WHEELS W/ADD-ON PLATFORM). . . . .	90 - 14	PUMP, FUEL INJECTION . . . . .	30 - 16
PLATFORM FLOORS, AROUND CAB (2101- ) (4 ROW SINGLE WHEELS EXCEPT 34"). . . . .	90 - 14	PUMP, FUEL TRANSFER (ROBERT BOSCH) . . . . .	30 - 27
PLATFORM FLOORS, AROUND CAB (2101- ) (5 ROW 30",32",34" W/DUALS & PLATFORM) . . . . .	90 - 14	PUMP, HYDRAULIC . . . . .	70 - 6
PLATFORM FRAME (SERIAL NO. -XXXX). . . . .	90 - 2	PUMP, HYDRAULIC (45 CM3 (2.75 CU. IN.)). . . . .	70 - 10
PLATFORM FRAME (SERIAL NO.XXXX- ). . . . .	90 - 4	PUMP, HYDROSTATIC ( -4000) . . . . .	50 - 20
PLATFORM HANDRAILS AND LADDER . . . . .	90 - 22	PUMP, HYDROSTATIC (4001-9000). . . . .	50 - 22
PLATFORM HANDRAILS AND LADDERS (4 ROW WITH DUALS). . . . .	90 - 20	PUMP, HYDROSTATIC (9001- ). . . . .	50 - 24
PLATFORM WIRING HARNESS . . . . .	40 - 22	PUMP, LUBRICATION. . . . .	130 - 19
PLUGS AND SEALS, HYDROSTATIC PUMP . . . . .	50 - 30	PUMP, LUBRICATION (SERIAL NUMBER -4000). . . . .	130 - 6
PLUGS, UNIT CABINET . . . . .	110 - 38	PUMP, LUBRICATION TRANSFER . . . . .	130 - 14
PLUS-50 ENGINE OIL . . . . .	20 - 38	PUMP, LUBRICATION TRANSFER . . . . .	130 - 16
POINT, STALKLIFTER . . . . .	110 - 32	PUMP, OIL ENGINE . . . . .	20 - 30
POPPET, HYDROSTATIC PUMP. . . . .	50 - 30	PUMP, SOLUTION (S/N -9045) . . . . .	140 - 10
POST, BASKET SUPPORT . . . . .	160 - 2	PUMP, SOLUTION (S/N 9046- ). . . . .	140 - 11
POST, STEERING . . . . .	60 - 2	PUMP, WATER . . . . .	20 - 40
POSTS, PICKING UNIT (PRO-12, 18S). . . . .	110 - 6	PUMP, WATER (S/N -9045) . . . . .	140 - 10
POSTS, PICKING UNIT (PRO-16 20S) . . . . .	110 - 8	PUMP, WATER (S/N 9046- ). . . . .	140 - 11
POTENTIOMETER, CONSOLE, ROW-TRAK . . . . .	60 - 33	PUMP, WATER, SUPPORT AND FITTINGS (SERIAL NO. -9045) . . . . .	140 - 6
POTENTIOMETER, CONSOLE, ROW-TRAK . . . . .	60 - 34	PUMP, WATER, SUPPORT AND FITTINGS (SERIAL NO. 9046- ). . . . .	140 - 8
POWER STEERING VALVE . . . . .	60 - 4	PUSH RODS. . . . .	20 - 25
PRE-FUEL FILTER . . . . .	30 - 20		
PREFERRED METRIC HARDWARE . . . . .	180 - 2	R	
PREFERRED METRIC HARDWARE . . . . .	180 - 3	R.H. CAB PANELS AND WINDOW HINGE. . . . .	90 - 27
PRESSURE PLATE, FRONT DRUM (PRO-12 18S). . . . .	110 - 20	RADIATOR . . . . .	20 - 1
PRESSURE PLATE, FRONT DRUM (PRO-16 20S). . . . .	110 - 22	RADIATOR HOODS (SERIAL NO. -4000) . . . . .	80 - 23
PRESSURE PLATE, REAR DRUM (PRO-12 18S) . . . . .	110 - 24	RADIATOR HOODS (SERIAL NO. 4001- ). . . . .	80 - 24
PRESSURE PLATE, REAR DRUM (PRO-16 20S) . . . . .	110 - 26	RADIATOR HOSES. . . . .	20 - 64
PRESSURIZER BLOWER. . . . .	90 - 38	RADIATOR HOSES. . . . .	20 - 65
PROBE ASSEMBLY, ROW-TRAK GUIDANCE SYSTEM. . . . .	60 - 30	RADIATOR OVERFLOW TANK. . . . .	20 - 66
PROTECTORS AND SUPPORTS, BASKET FLOOR CONVEYOR CHAIN . . . . .	160 - 30	RADIATOR SIDE PANELS (S.N. -4000) . . . . .	80 - 26
PULLEY AND BELT ARRANGEMENT . . . . .	20 - 67	RADIATOR SIDE PANELS (S.N. 4001- ). . . . .	80 - 28
PULLEY, AIR CONDITIONER COMPRESSOR FAN (S/N 4001- ). . . . .	40 - 43	RADIO HARNESS . . . . .	40 - 51
PULLEY, COTTON FAN DRIVE . . . . .	150 - 2	RADIO, ANTENNA AND SPEAKERS . . . . .	40 - 50
PULLEY, CRANKSHAFT AND DAMPERS. . . . .	20 - 16	RADIUS GAUGES, DOFFER . . . . .	120 - 28
PULLEY, FAN (HN003) . . . . .	20 - 68	RAIL AND SHIFTER, TRANSMISSION HOUSING . . . . .	50 - 10
PULLEY, HYDRAULIC PUMP DRIVE . . . . .	70 - 5	RAILS, BASKET LID . . . . .	160 - 52
PULLEY,ALTERNATOR . . . . .	40 - 48	RAKE BAR, ROTARY SCREEN . . . . .	20 - 52
PUMP CONTROL LEVERS AND RODS, HYDROSTATIC . . . . .	50 - 15	REAR AXLE CENTER . . . . .	80 - 1
PUMP DISPLACEMENT CONTROL, HYDROSTATIC . . . . .	50 - 34	REAR AXLE FRONT PIVOT SUPPORT . . . . .	80 - 2
PUMP DRIVE, HYDROSTATIC (SERIAL NO. -4000) . . . . .	50 - 18	REAR AXLE KNEE AND KNUCKLE . . . . .	80 - 6
PUMP DRIVE, HYDROSTATIC (SERIAL NO. 4001- ). . . . .	50 - 19	REAR AXLE REAR PIVOT SUPPORT . . . . .	80 - 4
PUMP END CAP, HYDROSTATIC . . . . .	50 - 36	REAR AXLE TIE RODS . . . . .	80 - 8
PUMP FRAME ASSEMBLY, HYDRO ( -4000). . . . .	80 - 40	REAR DRUM PRESSURE PLATE (PRO-12 18S). . . . .	110 - 24
PUMP FRAME ASSEMBLY, HYDRO (4001- ). . . . .	80 - 42	REAR DRUM PRESSURE PLATE (PRO-16 20S). . . . .	110 - 26
PUMP HOUSING, SWASHPLATE AND CYLINDER BLOCK, HYDROSTATIC . . . . .	50 - 32	REAR LIGHTS AND FUEL SENDER WIRING HARNESS . . . . .	40 - 8
PUMP MOUNTING, AUX. PUMP TO HYDROSTATIC PUMP . . . . .	50 - 38	REAR LIGHTS AND FUEL SENDER WIRING HARNESS . . . . .	40 - 9
PUMP SHAFT AND LEVELER ASSY., HYDROSTATIC . . . . .	50 - 28	REAR OIL SEAL . . . . .	20 - 15
PUMP SUPPORT ASSEMBLY, HYDRO (SERIAL NO. -4000) . . . . .	80 - 44		